



**ELECTRONIC COPY**

**LABORATORY GROWN DIAMOND REPORT**

February 16, 2026  
IGI Report Number **LG771657305**  
Description **LABORATORY GROWN DIAMOND**  
Shape and Cutting Style **SQUARE CUSHION MODIFIED BRILLIANT**  
Measurements **12.99 X 12.85 X 8.92 MM**

**GRADING RESULTS**

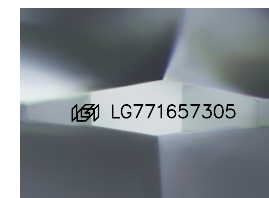
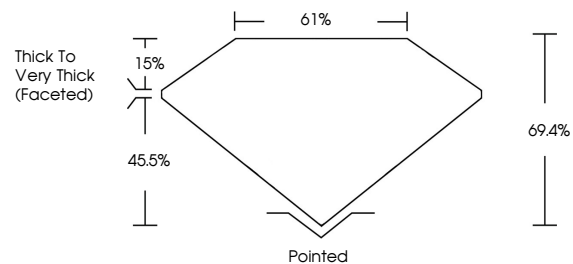
Carat Weight **14.05 CARATS**  
Color Grade **FANCY VIVID PINK**  
Clarity Grade **VVS 2**

**ADDITIONAL GRADING INFORMATION**

Polish **EXCELLENT**  
Symmetry **EXCELLENT**  
Fluorescence **STRONG**  
Inscription(s) **IGI LG771657305**

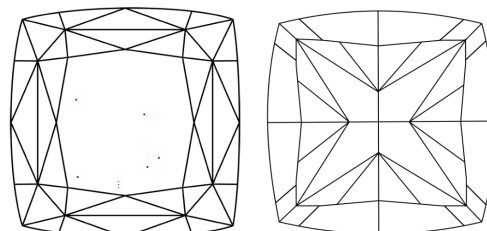
Comments: This Laboratory Grown Diamond was created by Chemical Vapor Deposition (CVD) growth process. Indications of post-growth treatment.

**PROPORTIONS**



Sample Image Used

**CLARITY CHARACTERISTICS**



**KEY TO SYMBOLS**

Red symbols indicate internal characteristics.  
Green symbols indicate external characteristics.

**COLOR**

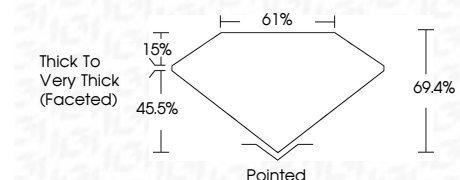
D E F G H I J Faint Very Light Light

**CLARITY**

FL	IF	VVS <sup>1-2</sup>	VS <sup>1-2</sup>	SI <sup>1-2</sup>	I <sup>1-3</sup>
Flawless	Internally Flawless	Very Very Slightly Included	Very Slightly Included	Slightly Included	Included



February 16, 2026  
IGI Report Number **LG771657305**  
Description **LABORATORY GROWN DIAMOND**  
Shape and Cutting Style **SQUARE CUSHION MODIFIED BRILLIANT**  
Measurements **12.99 X 12.85 X 8.92 MM**  
**GRADING RESULTS**  
Carat Weight **14.05 CARATS**  
Color Grade **FANCY VIVID PINK**  
Clarity Grade **VVS 2**



**ADDITIONAL GRADING INFORMATION**

Polish **EXCELLENT**  
Symmetry **EXCELLENT**  
Fluorescence **STRONG**  
Inscription(s) **IGI LG771657305**  
Comments: This Laboratory Grown Diamond was created by Chemical Vapor Deposition (CVD) growth process. Indications of post-growth treatment.



February 16, 2026  
IGI Report No LG771657305  
**SQUARE CUSHION MODIFIED BRILLIANT**  
14.05 CARATS  
12.99 X 12.85 X 8.92 MM  
Carat Weight  
Color Grade  
Clarity Grade  
Depth  
Table  
Girdle  
Culet  
Polish  
Symmetry  
Fluorescence  
Inscription(s)  
**FANCY VIVID PINK**  
**VVS 2**  
**69.4%**  
**61%**  
**Thick to Very Thick (Faceted)**  
**Pointed**  
**EXCELLENT**  
**EXCELLENT**  
**STRONG**  
**IGI LG771657305**

Comments: This Laboratory Grown Diamond was created by Chemical Vapor Deposition (CVD) growth process. Indications of post-growth treatment.