



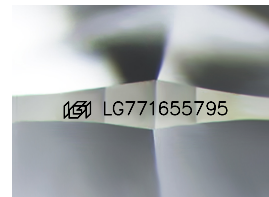
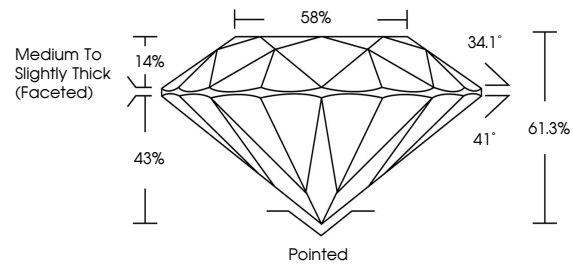
**INTERNATIONAL
GEMOLOGICAL
INSTITUTE**

ELECTRONIC COPY

LABORATORY GROWN DIAMOND REPORT

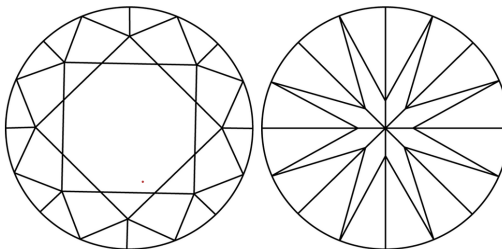
LG771655795
Report verification at [igi.org](https://www.igi.org)

PROPORTIONS



Sample Image Used

CLARITY CHARACTERISTICS



KEY TO SYMBOLS

Red symbols indicate internal characteristics.
Green symbols indicate external characteristics.

COLOR

D E F G H I J Faint Very Light Light

CLARITY

FL	IF	VVS ¹⁻²	VS ¹⁻²	SI ¹⁻²	I ¹⁻³
Flawless	Internally Flawless	Very Very Slightly Included	Very Slightly Included	Slightly Included	Included



January 31, 2026

IGI Report Number **LG771655795**

Description	LABORATORY GROWN DIAMOND
-------------	--------------------------

Shape and Cutting Style **ROUND BRILLIANT**

Measurements 6.45 - 6.52 X 3.97 MM

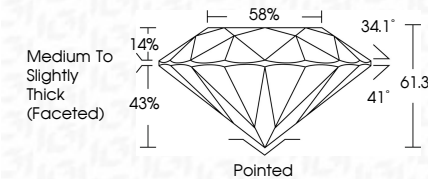
GRADING RESULTS

Carat Weight **1.02 CARAT**

Color Grade **D**

Clarity Grade VVS 2

Cut Grade **IDEAL**



ADDITIONAL GRADING INFORMATION

Polish **EXCELLENT**Symmetry **EXCELLENT**Fluorescence **NONE**Inscription(s)  LG77165579

Comments: This Laboratory Grown Diamond was created by Chemical Vapor Deposition (CVD) growth process.
Type IIa



IG



© IGI 2020, International Gemological Institute

FD - 10 20

www.igi.org

THIS DOCUMENT WAS PRODUCED WITH THE FOLLOWING SECURITY MEASURES: SPECIAL DOCUMENT PAPER, INK SCREENS, WATERMARK, BACKGROUND DESIGNS, HOLOGRAM AND OTHER SECURITY FEATURES NOT LISTED AND DO EXCEED DOCUMENT SECURITY INDUSTRY GUIDELINES

January 31, 2026	1.02 CARAT
IGI Report No. IGI1655795	VVS 2
ROUND BRILLIANT	IDEAL
4.62 X 5.97 MM	61.5%
Color Weight	89%
Color Grade	Medium to Slightly Thick (Faceted)
Clarity Grade	Painted
Cut Grade	EXCELLENT
Depth	EXCELLENT
Table	NONE
Girdle	6811 G771655795
Culet	
Polish	
Symmetry	
Fluorescence	
Inscription(s)	
Comments:	
	The Laboratory Grown Diamond was created by Chemical Vapor Deposition (CVD) growth process.
	Type Ila