



ELECTRONIC COPY

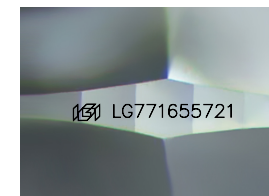
LG771655721
Report verification at igi.org



February 2, 2026
IGI Report Number **LG771655721**
Description **LABORATORY GROWN DIAMOND**
Shape and Cutting Style **SQUARE CUSHION MODIFIED
BRILLIANT**
Measurements **7.04 X 6.76 X 4.51 MM**

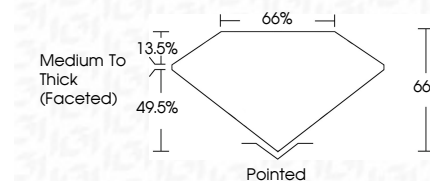
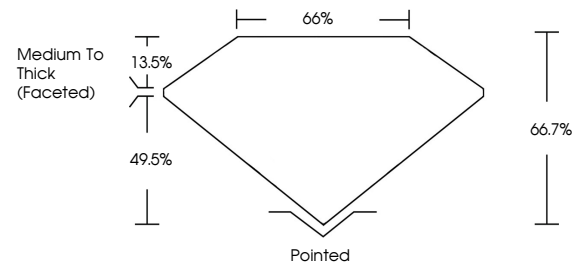
GRADING RESULTS

Carat Weight **1.68 CARAT**
Color Grade **D**
Clarity Grade **VVS 2**



Sample Image Used

PROPORTIONS



February 2, 2026
IGI Report Number **LG771655721**
Description **LABORATORY GROWN DIAMOND**
Shape and Cutting Style **SQUARE CUSHION MODIFIED
BRILLIANT**
Measurements **7.04 X 6.76 X 4.51 MM**

GRADING RESULTS

Carat Weight **1.68 CARAT**
Color Grade **D**
Clarity Grade **VVS 2**

ADDITIONAL GRADING INFORMATION

Polish **EXCELLENT**
Symmetry **EXCELLENT**
Fluorescence **NONE**
Inscription(s) **IGI LG771655721**

Comments: This Laboratory Grown Diamond was created by Chemical Vapor Deposition (CVD) growth process. Type IIa

COLOR

D E F G H I J Faint Very Light Light

CLARITY

| FL | IF | VVS ¹⁻² | VS ¹⁻² | SI ¹⁻² | I ¹⁻³ |
|----------|---------------------|-----------------------------|------------------------|-------------------|------------------|
| Flawless | Internally Flawless | Very Very Slightly Included | Very Slightly Included | Slightly Included | Included |

ADDITIONAL GRADING INFORMATION

Polish **EXCELLENT**
Symmetry **EXCELLENT**
Fluorescence **NONE**
Inscription(s) **IGI LG771655721**
Comments: This Laboratory Grown Diamond was created by Chemical Vapor Deposition (CVD) growth process. Type IIa



IGI



February 2, 2026
IGI Report No **LG771655721**
SQUARE CUSHION MODIFIED BRILLIANT
7.04 X 6.76 X 4.51 MM
Carat Weight **1.68 CARAT**
Color Grade **D**
Clarity Grade **VVS 2**
Depth **66.7%**
Table **66%**
Girdle **Medium To Thick (Faceted)**
Culet **Pointed**
Polish **EXCELLENT**
Symmetry **EXCELLENT**
Fluorescence **NONE**
Inscription(s) **IGI LG771655721**
Comments: This Laboratory Grown Diamond was created by Chemical Vapor Deposition (CVD) growth process. Type IIa