



**ELECTRONIC COPY**

LG771653999  
Report verification at igi.org



February 11, 2026  
IGI Report Number **LG771653999**  
Description **LABORATORY GROWN DIAMOND**  
Shape and Cutting Style **CUSHION MODIFIED BRILLIANT**  
Measurements **7.97 X 7.55 X 5.06 MM**  
**GRADING RESULTS**  
Carat Weight **2.67 CARATS**  
Color Grade **D**  
Clarity Grade **VVS 2**

February 11, 2026  
IGI Report Number **LG771653999**  
Description **LABORATORY GROWN DIAMOND**  
Shape and Cutting Style **CUSHION MODIFIED BRILLIANT**  
Measurements **7.97 X 7.55 X 5.06 MM**

**GRADING RESULTS**

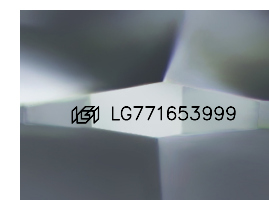
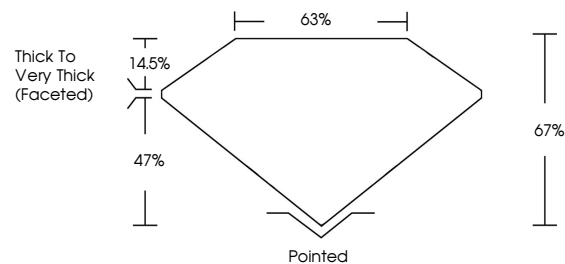
Carat Weight **2.67 CARATS**  
Color Grade **D**  
Clarity Grade **VVS 2**

**ADDITIONAL GRADING INFORMATION**

Polish **EXCELLENT**  
Symmetry **VERY GOOD**  
Fluorescence **NONE**  
Inscription(s) **IGI LG771653999**

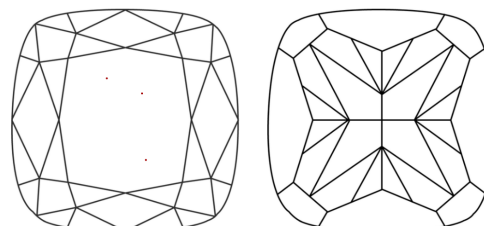
Comments: This Laboratory Grown Diamond was created by Chemical Vapor Deposition (CVD) growth process. Type IIa

**PROPORTIONS**



Sample Image Used

**CLARITY CHARACTERISTICS**



**KEY TO SYMBOLS**

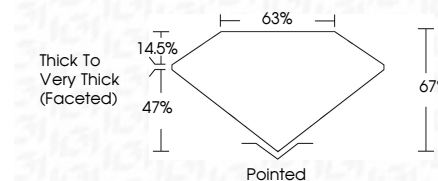
Red symbols indicate internal characteristics.  
Green symbols indicate external characteristics.

**COLOR**

D E F G H I J Faint Very Light Light

**CLARITY**

FL	IF	VVS <sup>1-2</sup>	VS <sup>1-2</sup>	SI <sup>1-2</sup>	I <sup>1-3</sup>
Flawless	Internally Flawless	Very Very Slightly Included	Very Slightly Included	Slightly Included	Included



**ADDITIONAL GRADING INFORMATION**

Polish **EXCELLENT**  
Symmetry **VERY GOOD**  
Fluorescence **NONE**  
Inscription(s) **IGI LG771653999**  
Comments: This Laboratory Grown Diamond was created by Chemical Vapor Deposition (CVD) growth process. Type IIa



**IGI**



February 11, 2026  
IGI Report No LG771653999  
**CUSHION MODIFIED BRILLIANT**  
2.67 CARATS  
D  
2.67 CARATS  
D  
7.97 X 7.55 X 5.06 MM  
VVS 2  
67%  
63%  
Thick to Very Thick (Faceted)  
Pointed  
EXCELLENT  
VERY GOOD  
NONE  
IGI LG771653999

Comments: This Laboratory Grown Diamond was created by Chemical Vapor Deposition (CVD) growth process. Type IIa