



**ELECTRONIC COPY**

LG771653380  
Report verification at igi.org



February 17, 2026  
IGI Report Number **LG771653380**  
Description **LABORATORY GROWN DIAMOND**  
Shape and Cutting Style **CUT CORNERED  
RECTANGULAR MODIFIED  
BRILLIANT**  
Measurements **12.22 X 8.21 X 5.18 MM**  
**GRADING RESULTS**  
Carat Weight **4.65 CARATS**  
Color Grade **FANCY VIVID PINK**  
Clarity Grade **VVS 2**

February 17, 2026  
IGI Report Number **LG771653380**  
Description **LABORATORY GROWN DIAMOND**  
Shape and Cutting Style **CUT CORNERED RECTANGULAR  
MODIFIED BRILLIANT**  
Measurements **12.22 X 8.21 X 5.18 MM**

**GRADING RESULTS**

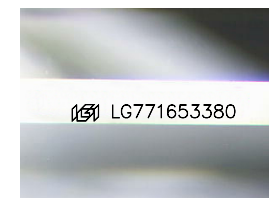
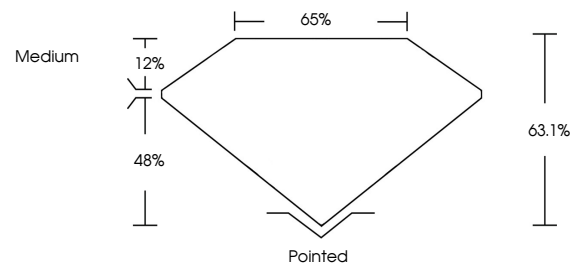
Carat Weight **4.65 CARATS**  
Color Grade **FANCY VIVID PINK**  
Clarity Grade **VVS 2**

**ADDITIONAL GRADING INFORMATION**

Polish **EXCELLENT**  
Symmetry **EXCELLENT**  
Fluorescence **STRONG**  
Inscription(s) **IGI LG771653380**

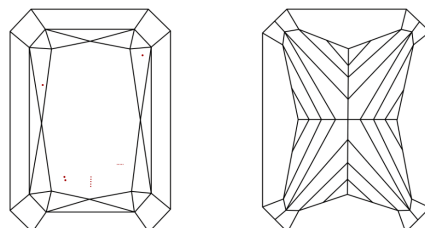
Comments: This Laboratory Grown Diamond was created by Chemical Vapor Deposition (CVD) growth process. Indications of post-growth treatment.

**PROPORTIONS**



Sample Image Used

**CLARITY CHARACTERISTICS**



**KEY TO SYMBOLS**

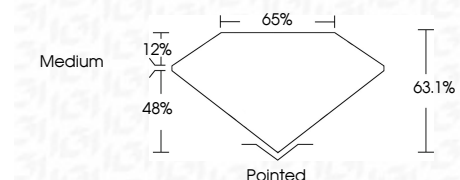
Red symbols indicate internal characteristics.  
Green symbols indicate external characteristics.

**COLOR**

D E F G H I J Faint Very Light Light

**CLARITY**

FL	IF	VVS <sup>1-2</sup>	VS <sup>1-2</sup>	SI <sup>1-2</sup>	I <sup>1-3</sup>
Flawless	Internally Flawless	Very Very Slightly Included	Very Slightly Included	Slightly Included	Included



**ADDITIONAL GRADING INFORMATION**

Polish **EXCELLENT**  
Symmetry **EXCELLENT**  
Fluorescence **STRONG**  
Inscription(s) **IGI LG771653380**  
Comments: This Laboratory Grown Diamond was created by Chemical Vapor Deposition (CVD) growth process. Indications of post-growth treatment.



**IGI**



February 17, 2026  
IGI Report No LG771653380  
CUT CORNERED RECT. MODIFIED BRILLIANT  
12.22 X 8.21 X 5.18 MM  
4.65 CARATS  
FANCY VIVID PINK  
VVS 2  
63.1%  
65%  
Medium  
Pointed  
EXCELLENT  
EXCELLENT  
STRONG  
IGI LG771653380

Comments: This Laboratory Grown Diamond was created by Chemical Vapor Deposition (CVD) growth process. Indications of post-growth treatment.