



ELECTRONIC COPY

LG771652518
Report verification at igi.org



February 17, 2026

IGI Report Number **LG771652518**

Description **LABORATORY GROWN DIAMOND**

Shape and Cutting Style **OVAL BRILLIANT**

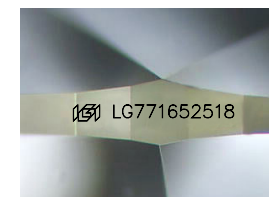
Measurements **13.58 X 9.65 X 6.00 MM**

GRADING RESULTS

Carat Weight **5.03 CARATS**

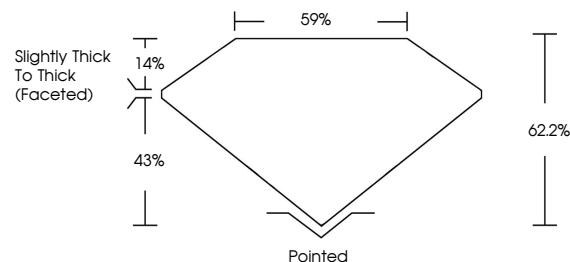
Color Grade **E**

Clarity Grade **VVS 2**

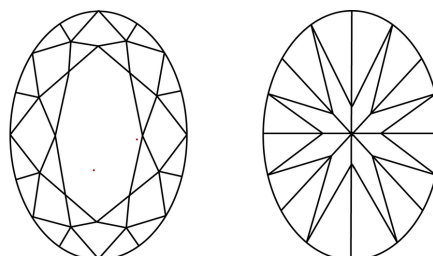


Sample Image Used

PROPORTIONS



CLARITY CHARACTERISTICS



KEY TO SYMBOLS

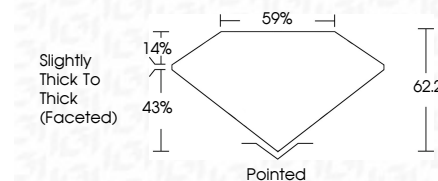
Red symbols indicate internal characteristics.
Green symbols indicate external characteristics.

COLOR

D E F G H I J Faint Very Light Light

CLARITY

| FL | IF | VVS ¹⁻² | VS ¹⁻² | SI ¹⁻² | I ¹⁻³ |
|----------|---------------------|-----------------------------|------------------------|-------------------|------------------|
| Flawless | Internally Flawless | Very Very Slightly Included | Very Slightly Included | Slightly Included | Included |



ADDITIONAL GRADING INFORMATION

Polish **EXCELLENT**

Symmetry **EXCELLENT**

Fluorescence **NONE**

Inscription(s) **IGI LG771652518**

Comments: This Laboratory Grown Diamond was created by Chemical Vapor Deposition (CVD) growth process. Type IIa



IGI



| | | | | | | | | | | | | |
|---------------------------|---------------------------|------------------------|-------------|---------------|-------|--------|-----------------------------------|---------|-----------|-----------|--------------|-----------------|
| February 17, 2026 | IGI Report No LG771652518 | 5.03 CARATS | E | VVS 2 | 62.2% | 59% | Slightly Thick To Thick (Faceted) | Pointed | EXCELLENT | EXCELLENT | NONE | IGI LG771652518 |
| IGI Report No LG771652518 | OVAL BRILLIANT | 13.58 X 9.65 X 6.00 MM | Color Grade | Clarity Grade | Table | Girdle | Clarity Thick To Thick (Faceted) | Culet | Polish | Symmetry | Fluorescence | Inscription(s) |

Comments: This Laboratory Grown Diamond was created by Chemical Vapor Deposition (CVD) growth process. Type IIa