



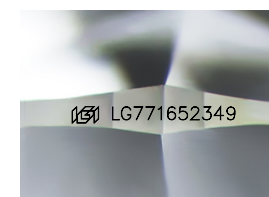
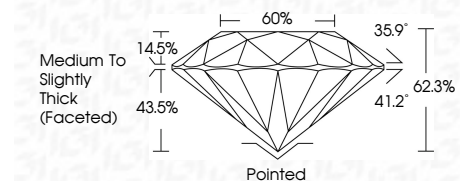
ELECTRONIC COPY

LG771652349
Report verification at igi.org



February 16, 2026
IGI Report Number LG771652349
Description LABORATORY GROWN DIAMOND
Shape and Cutting Style ROUND BRILLIANT
Measurements 9.18 - 9.27 X 5.76 MM

GRADING RESULTS
Carat Weight 3.05 CARATS
Color Grade F
Clarity Grade VVS 2
Cut Grade IDEAL



Sample Image Used

ADDITIONAL GRADING INFORMATION
Polish EXCELLENT
Symmetry EXCELLENT
Fluorescence NONE
Inscription(s) (IGI) LG771652349
Comments: This Laboratory Grown Diamond was created by Chemical Vapor Deposition (CVD) growth process. Type IIa



February 16, 2026
IGI Report No LG771652349
ROUND BRILLIANT
9.18 - 9.27 X 5.76 MM
3.05 CARATS
F
VVS 2
IDEAL
60%
Medium To Slightly Thick (Faceted)
Pointed
EXCELLENT
EXCELLENT
NONE
(IGI) LG771652349
Comments: This Laboratory Grown Diamond was created by Chemical Vapor Deposition (CVD) growth process. Type IIa

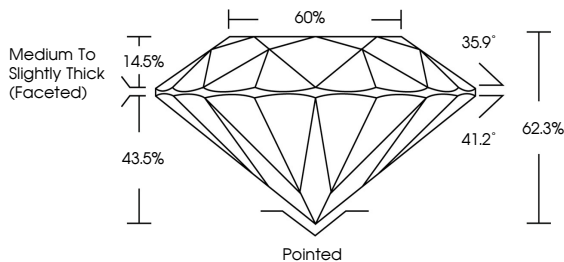
February 16, 2026
IGI Report Number LG771652349
Description LABORATORY GROWN DIAMOND
Shape and Cutting Style ROUND BRILLIANT
Measurements 9.18 - 9.27 X 5.76 MM

GRADING RESULTS
Carat Weight 3.05 CARATS
Color Grade F
Clarity Grade VVS 2
Cut Grade IDEAL

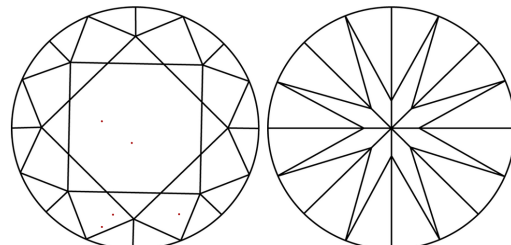
ADDITIONAL GRADING INFORMATION
Polish EXCELLENT
Symmetry EXCELLENT
Fluorescence NONE
Inscription(s) (IGI) LG771652349

Comments: This Laboratory Grown Diamond was created by Chemical Vapor Deposition (CVD) growth process. Type IIa

PROPORTIONS



CLARITY CHARACTERISTICS



KEY TO SYMBOLS
Red symbols indicate internal characteristics.
Green symbols indicate external characteristics.

Table with columns D, E, F, G, H, I, J, Faint, Very Light, Light

Table with columns FL, IF, VVS 1-2, VS 1-2, SI 1-2, I 1-3

