



ELECTRONIC COPY

LG771652247
Report verification at igi.org



February 11, 2026

IGI Report Number **LG771652247**

Description **LABORATORY GROWN DIAMOND**

Shape and Cutting Style **CUT CORNERED
RECTANGULAR MODIFIED
BRILLIANT**

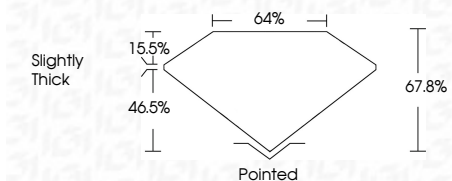
Measurements **11.29 X 8.41 X 5.70 MM**

GRADING RESULTS

Carat Weight **5.03 CARATS**

Color Grade **FANCY VIVID PINK**

Clarity Grade **VVS 2**



ADDITIONAL GRADING INFORMATION

Polish **EXCELLENT**

Symmetry **EXCELLENT**

Fluorescence **STRONG**

Inscription(s) **(IGI) LG771652247**

Comments: This Laboratory Grown Diamond was created by Chemical Vapor Deposition (CVD) growth process. Indications of post-growth treatment.



IGI

February 11, 2026

IGI Report Number **LG771652247**

Description **LABORATORY GROWN DIAMOND**

Shape and Cutting Style **CUT CORNERED RECTANGULAR
MODIFIED BRILLIANT**

Measurements **11.29 X 8.41 X 5.70 MM**

GRADING RESULTS

Carat Weight **5.03 CARATS**

Color Grade **FANCY VIVID PINK**

Clarity Grade **VVS 2**

ADDITIONAL GRADING INFORMATION

Polish **EXCELLENT**

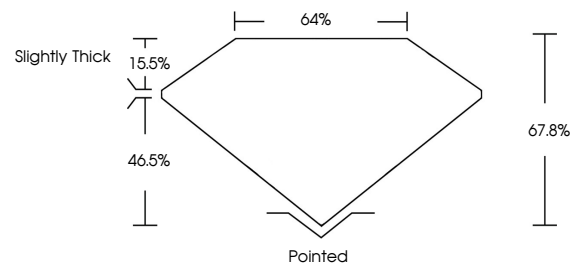
Symmetry **EXCELLENT**

Fluorescence **STRONG**

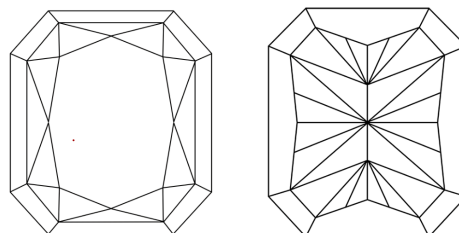
Inscription(s) **(IGI) LG771652247**

Comments: This Laboratory Grown Diamond was created by Chemical Vapor Deposition (CVD) growth process. Indications of post-growth treatment.

PROPORTIONS

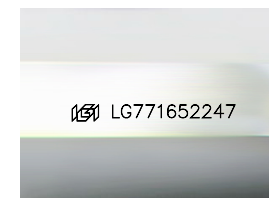


CLARITY CHARACTERISTICS



KEY TO SYMBOLS

Red symbols indicate internal characteristics.
Green symbols indicate external characteristics.



Sample Image Used

COLOR

D E F G H I J Faint Very Light Light

CLARITY

FL	IF	VVS ¹⁻²	VS ¹⁻²	SI ¹⁻²	I ¹⁻³
Flawless	Internally Flawless	Very Very Slightly Included	Very Slightly Included	Slightly Included	Included



February 11, 2026
IGI Report No LG771652247
CUT CORNERED RECT. MODIFIED BRILLIANT
11.29 X 8.41 X 5.70 MM
5.03 CARATS
FANCY VIVID PINK
VVS 2
67.8%
46.5%
Slightly Thick
Pointed
EXCELLENT
EXCELLENT
STRONG
(IGI) LG771652247

Comments: This Laboratory Grown Diamond was created by Chemical Vapor Deposition (CVD) growth process. Indications of post-growth treatment.