



ELECTRONIC COPY

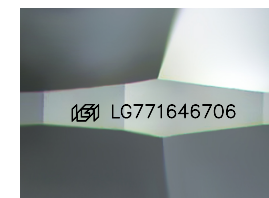
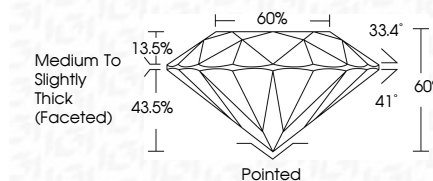
LG771646706
Report verification at igi.org



February 4, 2026
IGI Report Number LG771646706
Description LABORATORY GROWN DIAMOND
Shape and Cutting Style ROUND BRILLIANT
Measurements 8.14 - 8.19 X 4.90 MM

GRADING RESULTS

Carat Weight 2.02 CARATS
Color Grade E
Clarity Grade VS 1
Cut Grade IDEAL



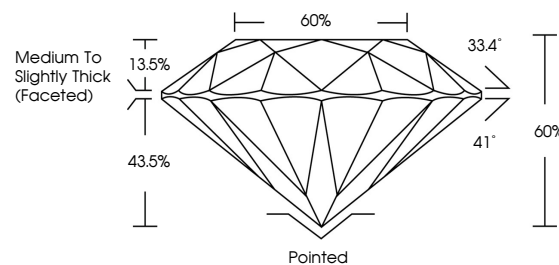
Sample Image Used

ADDITIONAL GRADING INFORMATION

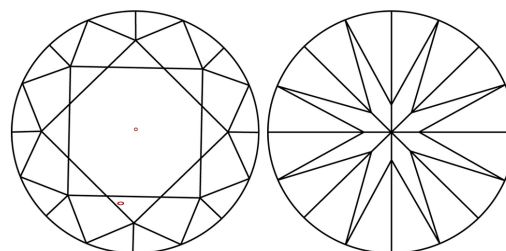
Polish EXCELLENT
Symmetry EXCELLENT
Fluorescence NONE
Inscription(s) LG771646706
Comments: This Laboratory Grown Diamond was created by Chemical Vapor Deposition (CVD) growth process. Type IIa



PROPORTIONS



CLARITY CHARACTERISTICS



KEY TO SYMBOLS

Red symbols indicate internal characteristics.
Green symbols indicate external characteristics.

COLOR

D E F G H I J Faint Very Light Light

CLARITY

FL IF VS 1-2 VS 2-3 SI 1-2 I 1-3
Flawless Internally Flawless Very Very Slightly Included Very Slightly Included Slightly Included Included



February 4, 2026
IGI Report No LG771646706
ROUND BRILLIANT
8.14 - 8.19 X 4.90 MM
2.02 CARATS
E
VS 1
IDEAL
60%
60%
Medium To Slightly Thick (Faceted)
Pointed
EXCELLENT
EXCELLENT
NONE
NONE
IGI LG771646706
Comments: This Laboratory Grown Diamond was created by Chemical Vapor Deposition (CVD) growth process. Type IIa