



**ELECTRONIC COPY**

LG771645940  
Report verification at [igi.org](http://igi.org)



March 9, 2026

IGI Report Number **LG771645940**

Description **LABORATORY GROWN DIAMOND**

Shape and Cutting Style **ROUND BRILLIANT**

Measurements **8.07 - 8.11 X 5.01 MM**

**GRADING RESULTS**

Carat Weight **2.03 CARATS**

Color Grade **D**

Clarity Grade **VVS 1**

Cut Grade **IDEAL**

March 9, 2026

IGI Report Number **LG771645940**

Description **LABORATORY GROWN DIAMOND**

Shape and Cutting Style **ROUND BRILLIANT**

Measurements **8.07 - 8.11 X 5.01 MM**

**GRADING RESULTS**

Carat Weight **2.03 CARATS**

Color Grade **D**

Clarity Grade **VVS 1**

Cut Grade **IDEAL**

**ADDITIONAL GRADING INFORMATION**

Polish **EXCELLENT**

Symmetry **EXCELLENT**

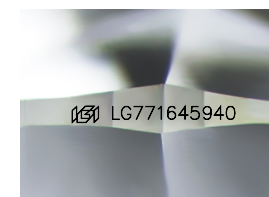
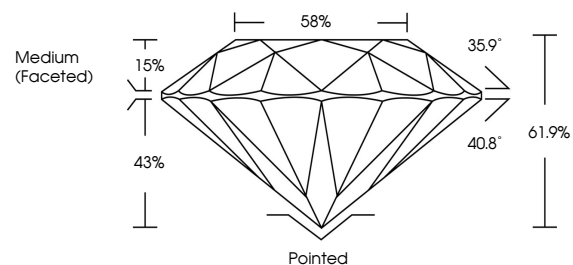
Fluorescence **NONE**

Inscription(s) **IGI LG771645940**

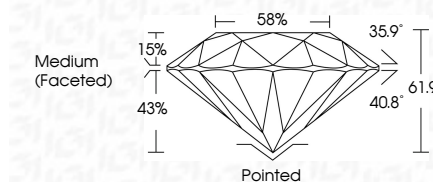
Comments: As Grown - No indication of post-growth treatment.

This Laboratory Grown Diamond was created by High Pressure High Temperature (HPHT) growth process. Type II

**PROPORTIONS**



Sample Image Used



**COLOR**

D E F G H I J Faint Very Light Light

**CLARITY**

FL	IF	VVS <sup>1-2</sup>	VS <sup>1-2</sup>	SI <sup>1-2</sup>	I <sup>1-3</sup>
Flawless	Internally Flawless	Very Very Slightly Included	Very Slightly Included	Slightly Included	Included

**ADDITIONAL GRADING INFORMATION**

Polish **EXCELLENT**

Symmetry **EXCELLENT**

Fluorescence **NONE**

Inscription(s) **IGI LG771645940**

Comments: As Grown - No indication of post-growth treatment.

This Laboratory Grown Diamond was created by High Pressure High Temperature (HPHT) growth process. Type II



**IGI**



March 9, 2026  
IGI Report No LG771645940  
**ROUND BRILLIANT**

**8.07 - 8.11 X 5.01 MM**

Carat Weight **2.03 CARATS**

Color Grade **D**

Clarity Grade **VVS 1**

Cut Grade **IDEAL**

Depth **61.9%**

Table **15%**

Girdle **Medium (Faceted)**

Culet **Pointed**

Polish **EXCELLENT**

Symmetry **EXCELLENT**

Fluorescence **NONE**

Inscription(s) **IGI LG771645940**

Comments: As Grown - No indication of post-growth treatment. This Laboratory Grown Diamond was created by High Pressure High Temperature (HPHT) growth process. Type II