



ELECTRONIC COPY

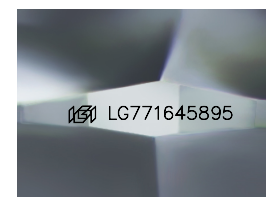
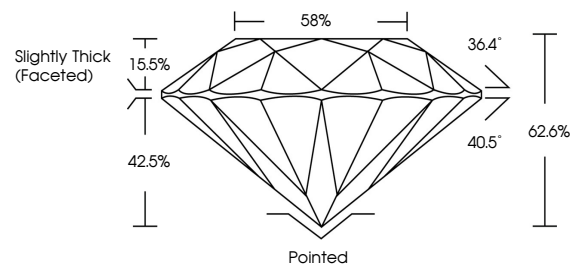
LG771645895
Report verification at igi.org



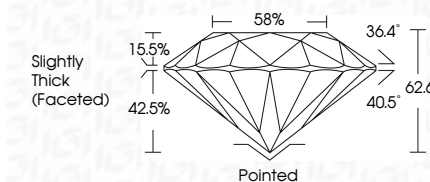
March 9, 2026
IGI Report Number LG771645895
Description LABORATORY GROWN DIAMOND
Shape and Cutting Style ROUND BRILLIANT
Measurements 7.93 - 8.00 X 4.99 MM
GRADING RESULTS
Carat Weight 2.00 CARATS
Color Grade D
Clarity Grade VVS 2
Cut Grade EXCELLENT

March 9, 2026
IGI Report Number LG771645895
Description LABORATORY GROWN DIAMOND
Shape and Cutting Style ROUND BRILLIANT
Measurements 7.93 - 8.00 X 4.99 MM
GRADING RESULTS
Carat Weight 2.00 CARATS
Color Grade D
Clarity Grade VVS 2
Cut Grade EXCELLENT

PROPORTIONS



Sample Image Used



ADDITIONAL GRADING INFORMATION

Polish EXCELLENT
Symmetry EXCELLENT
Fluorescence NONE
Inscription(s) IGI LG771645895

Comments: As Grown - No indication of post-growth treatment.
This Laboratory Grown Diamond was created by High Pressure High Temperature (HPHT) growth process.
Type II

COLOR

D E F G H I J Faint Very Light Light

CLARITY

FL IF VVS 1-2 VS 1-2 SI 1-2 I 1-3
Flawless Internally Flawless Very Very Slightly Very Slightly Slightly Included Included

ADDITIONAL GRADING INFORMATION

Polish EXCELLENT
Symmetry EXCELLENT
Fluorescence NONE
Inscription(s) IGI LG771645895
Comments: As Grown - No indication of post-growth treatment.
This Laboratory Grown Diamond was created by High Pressure High Temperature (HPHT) growth process.
Type II



March 9, 2026
IGI Report No LG771645895
ROUND BRILLIANT
7.93 - 8.00 X 4.99 MM
2.00 CARATS
Color Grade D
Clarity Grade VVS 2
Depth 62.6%
Table 58%
Girdle Slightly Thick (Faceted)
Culet Pointed
Polish EXCELLENT
Symmetry EXCELLENT
Fluorescence NONE
Inscriptions(s) IGI LG771645895
Comments: As Grown - No indication of post-growth treatment.
This Laboratory Grown Diamond was created by High Pressure High Temperature (HPHT) growth process.
Type II