



ELECTRONIC COPY

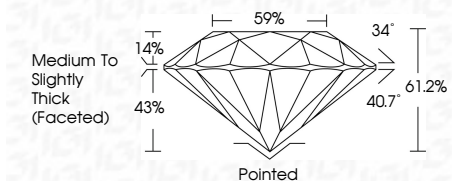
LG771644312 Report verification at igi.org



February 5, 2026 IGI Report Number LG771644312 Description LABORATORY GROWN DIAMOND Shape and Cutting Style ROUND BRILLIANT Measurements 7.92 - 7.99 X 4.86 MM

GRADING RESULTS

Carat Weight 1.90 CARAT Color Grade D Clarity Grade VVS 2 Cut Grade IDEAL



ADDITIONAL GRADING INFORMATION

Polish EXCELLENT Symmetry EXCELLENT Fluorescence NONE Inscription(s) IGI LG771644312 Comments: This Laboratory Grown Diamond was created by Chemical Vapor Deposition (CVD) growth process. Type IIa



February 5, 2026 IGI Report No LG771644312 ROUND BRILLIANT 1.90 CARAT D VVS 2 IDEAL 61.2% 59% Medium To Slightly Thick (Faceted) Pointed EXCELLENT EXCELLENT NONE IGI LG771644312 Comments: This Laboratory Grown Diamond was created by Chemical Vapor Deposition (CVD) growth process. Type IIa

February 5, 2026 IGI Report Number LG771644312 Description LABORATORY GROWN DIAMOND Shape and Cutting Style ROUND BRILLIANT Measurements 7.92 - 7.99 X 4.86 MM

GRADING RESULTS

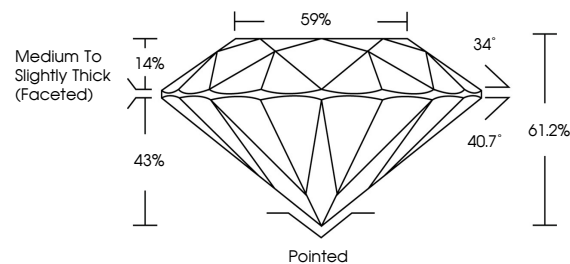
Carat Weight 1.90 CARAT Color Grade D Clarity Grade VVS 2 Cut Grade IDEAL

ADDITIONAL GRADING INFORMATION

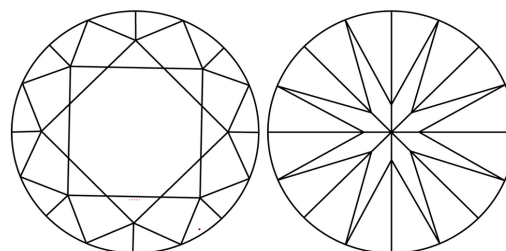
Polish EXCELLENT Symmetry EXCELLENT Fluorescence NONE Inscription(s) IGI LG771644312

Comments: This Laboratory Grown Diamond was created by Chemical Vapor Deposition (CVD) growth process. Type IIa

PROPORTIONS

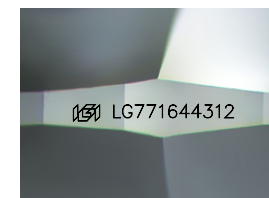


CLARITY CHARACTERISTICS



KEY TO SYMBOLS

Red symbols indicate internal characteristics. Green symbols indicate external characteristics.



Sample Image Used

COLOR

D E F G H I J Faint Very Light Light

CLARITY

FL IF VVS 1-2 VS 1-2 SI 1-2 I 1-3 Flawless Internally Flawless Very Very Slightly Included Very Slightly Included Slightly Included Included

