



ELECTRONIC COPY

LG771642985
Report verification at igi.org



April 7, 2026

IGI Report Number **LG771642985**

Description **LABORATORY GROWN DIAMOND**

Shape and Cutting Style **CUT CORNERED
RECTANGULAR MODIFIED
BRILLIANT**

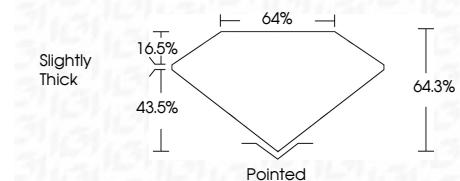
Measurements **7.59 X 5.69 X 3.66 MM**

GRADING RESULTS

Carat Weight **1.41 CARAT**

Color Grade **G**

Clarity Grade **VS 1**



ADDITIONAL GRADING INFORMATION

Polish **EXCELLENT**

Symmetry **EXCELLENT**

Fluorescence **NONE**

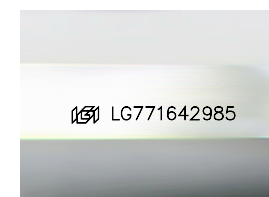
Inscription(s) **IGI LG771642985**

Comments: This Laboratory Grown Diamond was created by Chemical Vapor Deposition (CVD) growth process. Type IIa



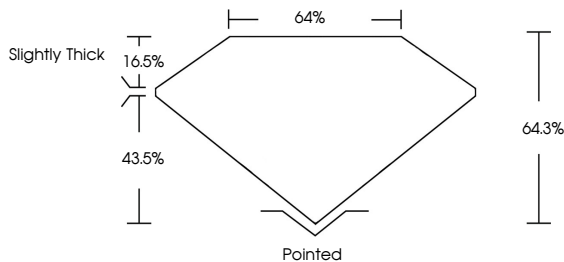
| | | |
|-----------------------|---------------------------|---------------------------------------|
| April 7, 2026 | IGI Report No LG771642985 | CUT CORNERED RECT. MODIFIED BRILLIANT |
| 7.59 X 5.69 X 3.66 MM | 1.41 CARAT | G |
| VS 1 | 64.3% | 43.5% |
| Slightly Thick | Pointed | EXCELLENT |
| EXCELLENT | EXCELLENT | NONE |
| IGI LG771642985 | | |

Comments: This Laboratory Grown Diamond was created by Chemical Vapor Deposition (CVD) growth process. Type IIa

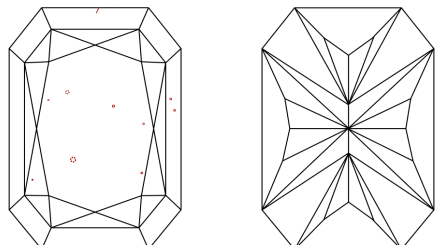


Sample Image Used

PROPORTIONS



CLARITY CHARACTERISTICS



KEY TO SYMBOLS
Red symbols indicate internal characteristics.
Green symbols indicate external characteristics.

COLOR

| | | | | | | | | | |
|---|---|---|---|---|---|---|-------|------------|-------|
| D | E | F | G | H | I | J | Faint | Very Light | Light |
|---|---|---|---|---|---|---|-------|------------|-------|

CLARITY

| | | | | | |
|----------|---------------------|-----------------------------|------------------------|-------------------|------------------|
| FL | IF | VS ¹⁻² | VS ¹⁻² | SI ¹⁻² | I ¹⁻³ |
| Flawless | Internally Flawless | Very Very Slightly Included | Very Slightly Included | Slightly Included | Included |

