



ELECTRONIC COPY

LG771640143
Report verification at igi.org



April 9, 2026

IGI Report Number **LG771640143**

Description **LABORATORY GROWN DIAMOND**

Shape and Cutting Style **OVAL BRILLIANT**

Measurements **8.46 X 6.04 X 3.72 MM**

GRADING RESULTS

Carat Weight **1.19 CARAT**

Color Grade **FANCY VIVID PINK**

Clarity Grade **VVS 1**

April 9, 2026
IGI Report Number **LG771640143**
Description **LABORATORY GROWN DIAMOND**
Shape and Cutting Style **OVAL BRILLIANT**
Measurements **8.46 X 6.04 X 3.72 MM**

GRADING RESULTS

Carat Weight **1.19 CARAT**

Color Grade **FANCY VIVID PINK**

Clarity Grade **VVS 1**

ADDITIONAL GRADING INFORMATION

Polish **EXCELLENT**

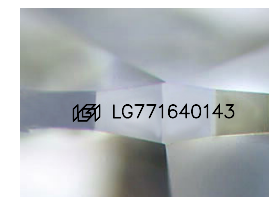
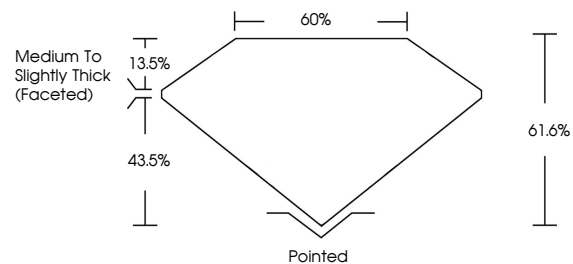
Symmetry **EXCELLENT**

Fluorescence **STRONG**

Inscription(s) **IGI LG771640143**

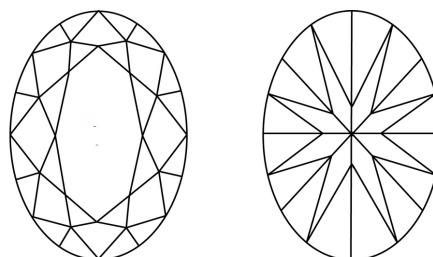
Comments: This Laboratory Grown Diamond was created by High Pressure High Temperature (HPHT) growth process. Indications of post-growth treatment.

PROPORTIONS



Sample Image Used

CLARITY CHARACTERISTICS



KEY TO SYMBOLS

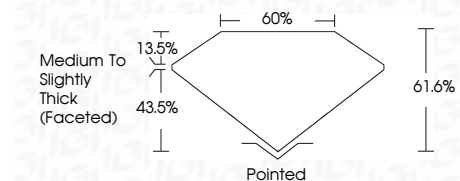
Red symbols indicate internal characteristics.
Green symbols indicate external characteristics.

COLOR

D E F G H I J Faint Very Light Light

CLARITY

FL	IF	VVS ¹⁻²	VS ¹⁻²	SI ¹⁻²	I ¹⁻³
Flawless	Internally Flawless	Very Very Slightly Included	Very Slightly Included	Slightly Included	Included



ADDITIONAL GRADING INFORMATION

Polish **EXCELLENT**

Symmetry **EXCELLENT**

Fluorescence **STRONG**

Inscription(s) **IGI LG771640143**

Comments: This Laboratory Grown Diamond was created by High Pressure High Temperature (HPHT) growth process. Indications of post-growth treatment.



IGI



April 9, 2026
IGI Report No LG771640143
OVAL BRILLIANT
1.19 CARAT
8.46 X 6.04 X 3.72 MM
Color Grade **FANCY VIVID PINK**
Clarity Grade **VVS 1**
Depth **61.6%**
Table **43.5%**
Girdle **Medium to Slightly Thick (Faceted)**
Culet **Pointed**
Polish **EXCELLENT**
Symmetry **EXCELLENT**
Fluorescence **STRONG**
Inscription(s) **IGI LG771640143**

Comments: This Laboratory Grown Diamond was created by High Pressure High Temperature (HPHT) growth process. Indications of post-growth treatment.