



ELECTRONIC COPY

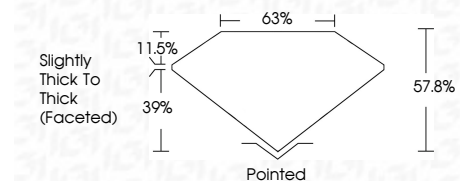
LG771639949
Report verification at igi.org



April 27, 2026
IGI Report Number **LG771639949**
Description **LABORATORY GROWN DIAMOND**
Shape and Cutting Style **HEART MODIFIED BRILLIANT**
Measurements **6.76 X 7.20 X 4.16 MM**

GRADING RESULTS

Carat Weight **1.53 CARAT**
Color Grade **FANCY LIGHT BLUE**
Clarity Grade **VVS 2**



ADDITIONAL GRADING INFORMATION

Polish **EXCELLENT**
Symmetry **EXCELLENT**
Fluorescence **NONE**
Inscription(s) **IGI LG771639949**
Comments: As Grown - No indication of post-growth treatment.
This Laboratory Grown Diamond was created by High Pressure High Temperature (HPHT) growth process.



April 27, 2026
IGI Report No **LG771639949**
HEART MODIFIED BRILLIANT
6.76 X 7.20 X 4.16 MM
1.53 CARAT
FANCY LIGHT BLUE
VVS 2
57.8%
63%
Slightly Thick To Thick (Faceted)
Pointed
EXCELLENT
EXCELLENT
NONE
IGI LG771639949
Comments: As Grown - No indication of post-growth treatment.
This Laboratory Grown Diamond was created by High Pressure High Temperature (HPHT) growth process.

April 27, 2026
IGI Report Number **LG771639949**
Description **LABORATORY GROWN DIAMOND**
Shape and Cutting Style **HEART MODIFIED BRILLIANT**
Measurements **6.76 X 7.20 X 4.16 MM**

GRADING RESULTS

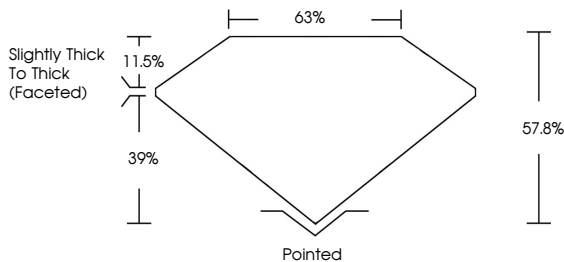
Carat Weight **1.53 CARAT**
Color Grade **FANCY LIGHT BLUE**
Clarity Grade **VVS 2**

ADDITIONAL GRADING INFORMATION

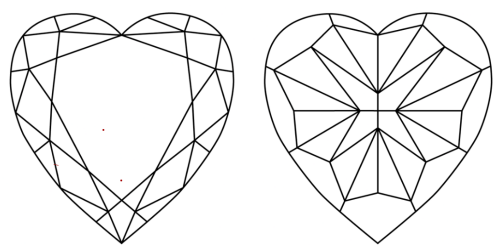
Polish **EXCELLENT**
Symmetry **EXCELLENT**
Fluorescence **NONE**
Inscription(s) **IGI LG771639949**

Comments: As Grown - No indication of post-growth treatment.
This Laboratory Grown Diamond was created by High Pressure High Temperature (HPHT) growth process.

PROPORTIONS

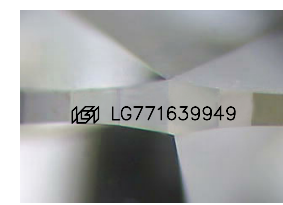


CLARITY CHARACTERISTICS



KEY TO SYMBOLS

Red symbols indicate internal characteristics.
Green symbols indicate external characteristics.



Sample Image Used

COLOR

D E F G H I J Faint Very Light Light

CLARITY

FL	IF	VVS ¹⁻²	VS ¹⁻²	SI ¹⁻²	I ¹⁻³
Flawless	Internally Flawless	Very Very Slightly Included	Very Slightly Included	Slightly Included	Included

