



ELECTRONIC COPY

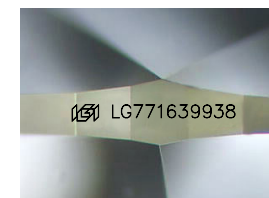
LG771639938
Report verification at igi.org



April 29, 2026
IGI Report Number **LG771639938**
Description **LABORATORY GROWN DIAMOND**

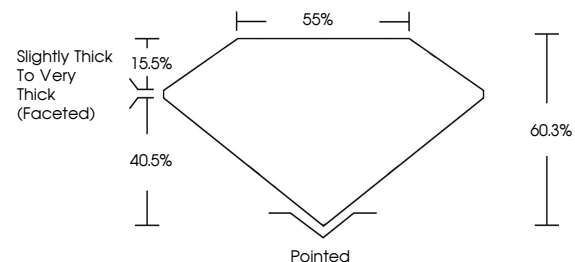
Shape and Cutting Style **PEAR MODIFIED BRILLIANT**
Measurements **12.08 X 7.01 X 4.23 MM**

GRADING RESULTS
Carat Weight **2.53 CARATS**
Color Grade **K**
Clarity Grade **VVS 2**

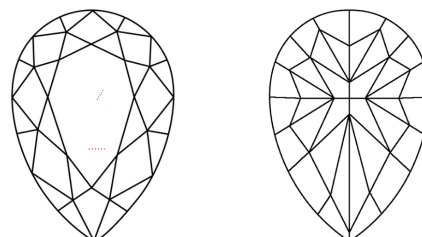


Sample Image Used

PROPORTIONS



CLARITY CHARACTERISTICS



KEY TO SYMBOLS

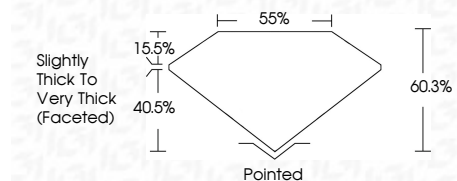
Red symbols indicate internal characteristics.
Green symbols indicate external characteristics.

COLOR

D E F G H I J Faint Very Light Light

CLARITY

FL	IF	VVS ¹⁻²	VS ¹⁻²	SI ¹⁻²	I ¹⁻³
Flawless	Internally Flawless	Very Very Slightly Included	Very Slightly Included	Slightly Included	Included



ADDITIONAL GRADING INFORMATION

Polish **EXCELLENT**
Symmetry **EXCELLENT**
Fluorescence **NONE**
Inscription(s) **IGI LG771639938**
Comments: This Laboratory Grown Diamond was created by Chemical Vapor Deposition (CVD) growth process. Type IIa



IGI



April 29, 2026
IGI Report No LG771639938
PEAR MODIFIED BRILLIANT
12.08 X 7.01 X 4.23 MM
Carat Weight **2.53 CARATS**
Color Grade **K**
Clarity Grade **VVS 2**
Depth **40.5%**
Table **15.5%**
Girdle **Slightly Thick To Very Thick (Faceted)**
Culet **Pointed**
Polish **EXCELLENT**
Symmetry **EXCELLENT**
Fluorescence **NONE**
Inscription(s) **IGI LG771639938**

Comments: This Laboratory Grown Diamond was created by Chemical Vapor Deposition (CVD) growth process. Type IIa