



ELECTRONIC COPY

LG771639748
Report verification at igi.org



April 25, 2026

IGI Report Number **LG771639748**

Description **LABORATORY GROWN DIAMOND**

Shape and Cutting Style **OVAL MODIFIED BRILLIANT**

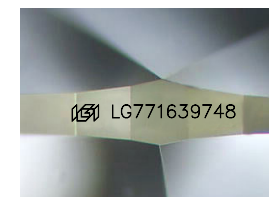
Measurements **10.64 X 5.94 X 3.46 MM**

GRADING RESULTS

Carat Weight **1.55 CARAT**

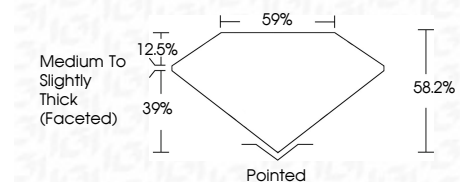
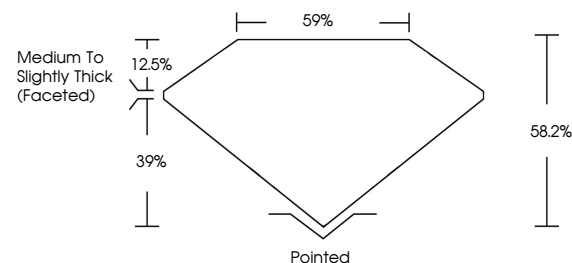
Color Grade **FANCY VIVID GREEN**

Clarity Grade **VS 2**

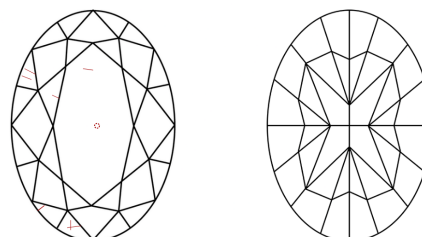


Sample Image Used

PROPORTIONS



CLARITY CHARACTERISTICS



KEY TO SYMBOLS

Red symbols indicate internal characteristics.
Green symbols indicate external characteristics.

COLOR

D E F G H I J Faint Very Light Light

CLARITY

FL	IF	VS ¹⁻²	VS ¹⁻²	SI ¹⁻²	I ¹⁻³
Flawless	Internally Flawless	Very Very Slightly Included	Very Slightly Included	Slightly Included	Included

ADDITIONAL GRADING INFORMATION

Polish **EXCELLENT**

Symmetry **EXCELLENT**

Fluorescence **NONE**

Inscription(s) **IGI LG771639748**

Comments: This Laboratory Grown Diamond was created by High Pressure High Temperature (HPHT) growth process. Indications of post-growth treatment.



IGI

April 25, 2026
IGI Report No LG771639748
OVAL MODIFIED BRILLIANT
10.64 X 5.94 X 3.46 MM
1.55 CARAT
FANCY VIVID GREEN
VS 2
58.2%
39%
Medium to Slightly Thick (Faceted)
Pointed
EXCELLENT
EXCELLENT
NONE
IGI LG771639748

Comments: This Laboratory Grown Diamond was created by High Pressure High Temperature (HPHT) growth process. Indications of post-growth treatment.