



ELECTRONIC COPY

LG771639594
Report verification at igi.org



April 22, 2026

IGI Report Number **LG771639594**

Description **LABORATORY GROWN DIAMOND**

Shape and Cutting Style **CUT CORNERED
RECTANGULAR MODIFIED
BRILLIANT**

Measurements **11.50 X 8.28 X 5.75 MM**

GRADING RESULTS

Carat Weight **5.04 CARATS**

Color Grade **FANCY INTENSE YELLOW**

Clarity Grade **VS 1**

April 22, 2026

IGI Report Number **LG771639594**

Description **LABORATORY GROWN DIAMOND**

Shape and Cutting Style **CUT CORNERED RECTANGULAR
MODIFIED BRILLIANT**

Measurements **11.50 X 8.28 X 5.75 MM**

GRADING RESULTS

Carat Weight **5.04 CARATS**

Color Grade **FANCY INTENSE YELLOW**

Clarity Grade **VS 1**

ADDITIONAL GRADING INFORMATION

Polish **EXCELLENT**

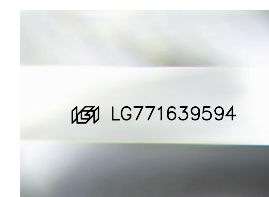
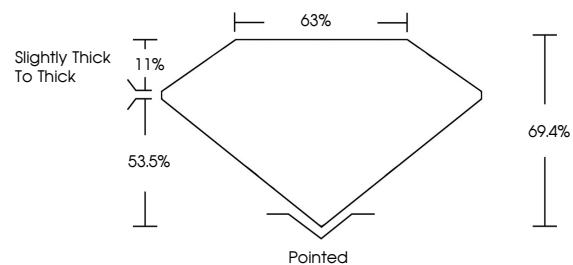
Symmetry **EXCELLENT**

Fluorescence **NONE**

Inscription(s) **IGI LG771639594**

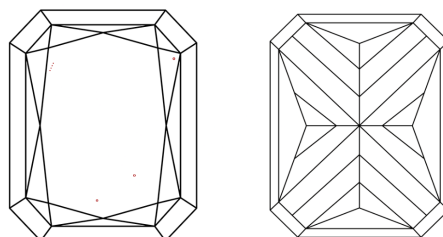
Comments: This Laboratory Grown Diamond was created by Chemical Vapor Deposition (CVD) growth process.

PROPORTIONS



Sample Image Used

CLARITY CHARACTERISTICS



KEY TO SYMBOLS

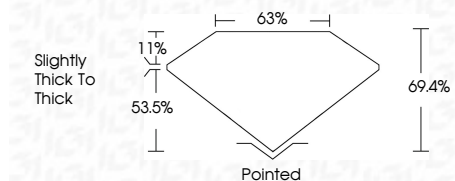
Red symbols indicate internal characteristics.
Green symbols indicate external characteristics.

COLOR

D E F G H I J Faint Very Light Light

CLARITY

| FL | IF | VS ¹⁻² | VS ¹⁻² | SI ¹⁻² | I ¹⁻³ |
|----------|---------------------|-----------------------------|------------------------|-------------------|------------------|
| Flawless | Internally Flawless | Very Very Slightly Included | Very Slightly Included | Slightly Included | Included |



ADDITIONAL GRADING INFORMATION

Polish **EXCELLENT**

Symmetry **EXCELLENT**

Fluorescence **NONE**

Inscription(s) **IGI LG771639594**

Comments: This Laboratory Grown Diamond was created by Chemical Vapor Deposition (CVD) growth process.



IGI



April 22, 2026
IGI Report No LG771639594
CUT CORNERED RECT. MODIFIED BRILLIANT

11.50 X 8.28 X 5.75 MM
5.04 CARATS
FANCY INTENSE YELLOW
VS 1
69.4%
53.5%
Slightly Thick To Thick

Pointed
EXCELLENT
EXCELLENT
NONE
IGI LG771639594

Comments: This Laboratory Grown Diamond was created by Chemical Vapor Deposition (CVD) growth process.