



ELECTRONIC COPY

LG771639496
Report verification at igi.org



April 17, 2026
IGI Report Number **LG771639496**
Description **LABORATORY GROWN DIAMOND**
Shape and Cutting Style **MODIFIED HEXAGONAL MIXED CUT**
Measurements **15.33 X 8.35 X 5.26 MM**
GRADING RESULTS
Carat Weight **4.10 CARATS**
Color Grade **E**
Clarity Grade **VS 1**

LABORATORY GROWN DIAMOND REPORT

April 17, 2026
IGI Report Number **LG771639496**
Description **LABORATORY GROWN DIAMOND**
Shape and Cutting Style **MODIFIED HEXAGONAL MIXED CUT**
Measurements **15.33 X 8.35 X 5.26 MM**

GRADING RESULTS

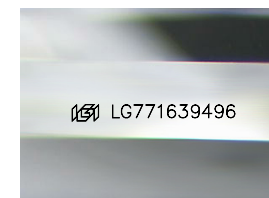
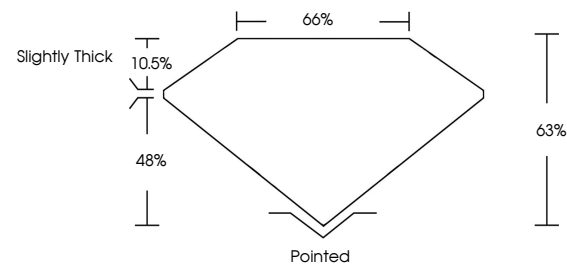
Carat Weight **4.10 CARATS**
Color Grade **E**
Clarity Grade **VS 1**

ADDITIONAL GRADING INFORMATION

Polish **EXCELLENT**
Symmetry **EXCELLENT**
Fluorescence **NONE**
Inscription(s) **IGI LG771639496**

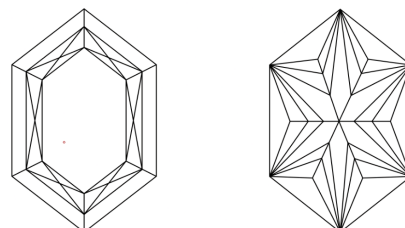
Comments: This Laboratory Grown Diamond was created by Chemical Vapor Deposition (CVD) growth process.
Type IIa

PROPORTIONS



Sample Image Used

CLARITY CHARACTERISTICS



KEY TO SYMBOLS

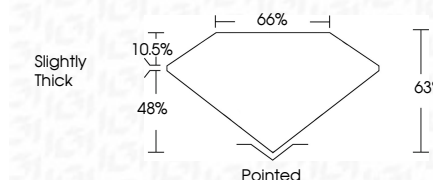
Red symbols indicate internal characteristics.
Green symbols indicate external characteristics.

COLOR

D E F G H I J Faint Very Light Light

CLARITY

FL	IF	VS ¹⁻²	VS ¹⁻²	SI ¹⁻²	I ¹⁻³
Flawless	Internally Flawless	Very Very Slightly Included	Very Slightly Included	Slightly Included	Included



ADDITIONAL GRADING INFORMATION

Polish **EXCELLENT**
Symmetry **EXCELLENT**
Fluorescence **NONE**
Inscription(s) **IGI LG771639496**
Comments: This Laboratory Grown Diamond was created by Chemical Vapor Deposition (CVD) growth process.
Type IIa



April 17, 2026
IGI Report No LG771639496
MODIFIED HEXAGONAL MIXED CUT
15.33 X 8.35 X 5.26 MM
4.10 CARATS
E
VS 1
63%
65%
Slightly Thick
Pointed
EXCELLENT
EXCELLENT
NONE
IGI LG771639496
Comments: This Laboratory Grown Diamond was created by Chemical Vapor Deposition (CVD) growth process.
Type IIa