



**ELECTRONIC COPY**

LG771639442  
Report verification at igi.org



April 20, 2026  
IGI Report Number **LG771639442**  
Description **LABORATORY GROWN DIAMOND**  
Shape and Cutting Style **CUT CORNERED  
RECTANGULAR MODIFIED  
BRILLIANT**  
Measurements **7.70 X 5.58 X 4.00 MM**  
**GRADING RESULTS**  
Carat Weight **1.53 CARAT**  
Color Grade **FANCY VIVID BLUE**  
Clarity Grade **SI 1**

**LABORATORY GROWN DIAMOND REPORT**

April 20, 2026  
IGI Report Number **LG771639442**  
Description **LABORATORY GROWN DIAMOND**  
Shape and Cutting Style **CUT CORNERED RECTANGULAR  
MODIFIED BRILLIANT**  
Measurements **7.70 X 5.58 X 4.00 MM**

**GRADING RESULTS**

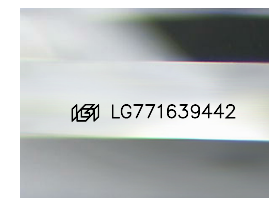
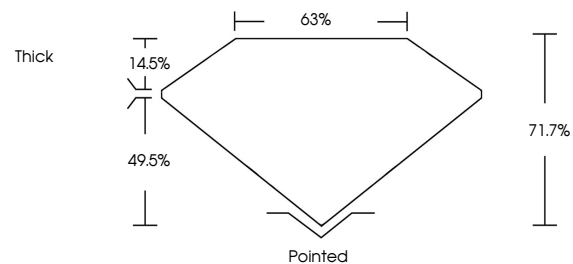
Carat Weight **1.53 CARAT**  
Color Grade **FANCY VIVID BLUE**  
Clarity Grade **SI 1**

**ADDITIONAL GRADING INFORMATION**

Polish **EXCELLENT**  
Symmetry **EXCELLENT**  
Fluorescence **NONE**  
Inscription(s) **IGI LG771639442**

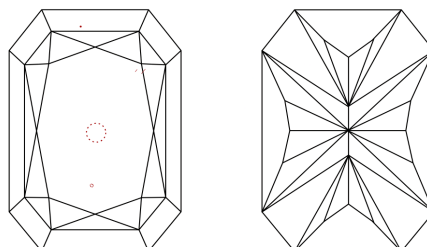
Comments: This Laboratory Grown Diamond was created by Chemical Vapor Deposition (CVD) growth process.  
Indications of post-growth treatment.

**PROPORTIONS**



Sample Image Used

**CLARITY CHARACTERISTICS**



**KEY TO SYMBOLS**

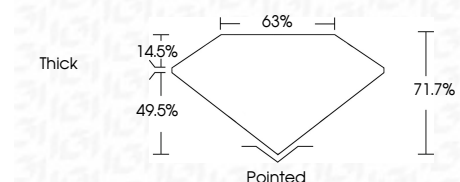
Red symbols indicate internal characteristics.  
Green symbols indicate external characteristics.

**COLOR**

D E F G H I J Faint Very Light Light

**CLARITY**

FL	IF	VS <sup>1-2</sup>	VS <sup>1-2</sup>	SI <sup>1-2</sup>	I <sup>1-3</sup>
Flawless	Internally Flawless	Very Very Slightly Included	Very Slightly Included	Slightly Included	Included



**ADDITIONAL GRADING INFORMATION**

Polish **EXCELLENT**  
Symmetry **EXCELLENT**  
Fluorescence **NONE**  
Inscription(s) **IGI LG771639442**  
Comments: This Laboratory Grown Diamond was created by Chemical Vapor Deposition (CVD) growth process.  
Indications of post-growth treatment.



**IGI**



April 20, 2026  
IGI Report No LG771639442  
CUT CORNERED RECT. MODIFIED BRILLIANT  
1.53 CARAT  
FANCY VIVID BLUE  
SI 1  
71.7%  
63%  
Thick  
Pointed  
EXCELLENT  
EXCELLENT  
NONE  
IGI LG771639442

Comments: This Laboratory Grown Diamond was created by Chemical Vapor Deposition (CVD) growth process.  
Indications of post-growth treatment.