



ELECTRONIC COPY

LG771639221 Report verification at igi.org



April 11, 2026 IGI Report Number LG771639221 Description LABORATORY GROWN DIAMOND Shape and Cutting Style HEXAGONAL MODIFIED STEP CUT

Measurements 12.80 X 7.20 X 4.54 MM

GRADING RESULTS Carat Weight 3.02 CARATS Color Grade FANCY PINK Clarity Grade VS 1

April 11, 2026 IGI Report Number LG771639221 Description LABORATORY GROWN DIAMOND Shape and Cutting Style HEXAGONAL MODIFIED STEP CUT Measurements 12.80 X 7.20 X 4.54 MM

GRADING RESULTS

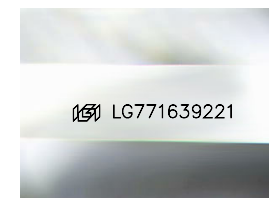
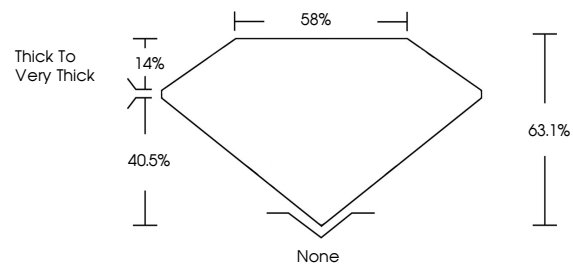
Carat Weight 3.02 CARATS Color Grade FANCY PINK Clarity Grade VS 1

ADDITIONAL GRADING INFORMATION

Polish EXCELLENT Symmetry EXCELLENT Fluorescence SLIGHT Inscription(s) LG771639221

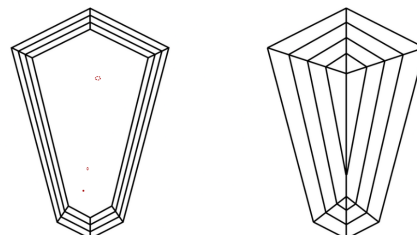
Comments: This Laboratory Grown Diamond was created by Chemical Vapor Deposition (CVD) growth process. Indications of post-growth treatment.

PROPORTIONS



Sample Image Used

CLARITY CHARACTERISTICS



KEY TO SYMBOLS

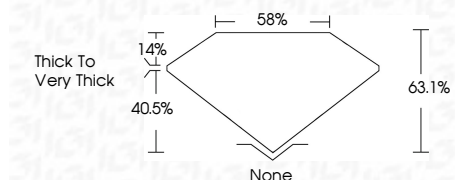
Red symbols indicate internal characteristics. Green symbols indicate external characteristics.

COLOR

D E F G H I J Faint Very Light Light

CLARITY

FL IF VS 1-2 VS 2-3 SI 1-2 I 1-3 Flawless Internally Flawless Very Very Slightly Included Very Slightly Included Slightly Included Included



ADDITIONAL GRADING INFORMATION

Polish EXCELLENT Symmetry EXCELLENT Fluorescence SLIGHT Inscription(s) LG771639221

Comments: This Laboratory Grown Diamond was created by Chemical Vapor Deposition (CVD) growth process. Indications of post-growth treatment.



April 11, 2026 IGI Report No LG771639221 HEXAGONAL MODIFIED STEP CUT 3.02 CARATS FANCY PINK VS 1 63.1% 40.5% Thick to Very Thick None EXCELLENT EXCELLENT SLIGHT LG771639221 Comments: This Laboratory Grown Diamond was created by Chemical Vapor Deposition (CVD) growth process. Indications of post-growth treatment.