



ELECTRONIC COPY

LABORATORY GROWN DIAMOND REPORT

April 9, 2026
IGI Report Number LG771639186
Description LABORATORY GROWN DIAMOND
Shape and Cutting Style CUT CORNERED RECTANGULAR MODIFIED BRILLIANT
Measurements 11.23 X 7.87 X 5.32 MM

GRADING RESULTS

Carat Weight 4.08 CARATS
Color Grade E
Clarity Grade VVS 2

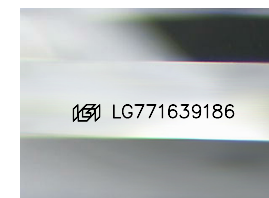
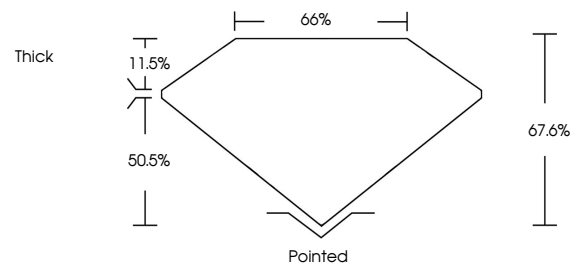
ADDITIONAL GRADING INFORMATION

Polish EXCELLENT
Symmetry EXCELLENT
Fluorescence NONE

Inscription(s) LG771639186

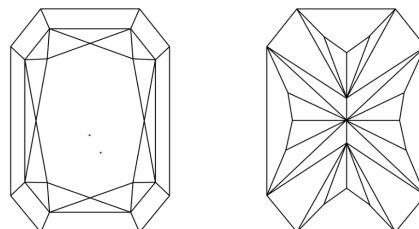
Comments: This Laboratory Grown Diamond was created by Chemical Vapor Deposition (CVD) growth process. Type IIa

PROPORTIONS



Sample Image Used

CLARITY CHARACTERISTICS



KEY TO SYMBOLS

Red symbols indicate internal characteristics. Green symbols indicate external characteristics.

COLOR

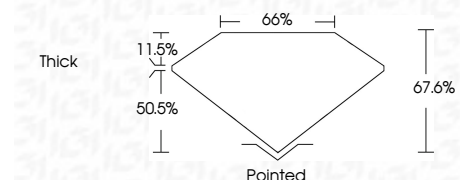
D E F G H I J Faint Very Light Light

CLARITY

FL IF VVS 1-2 VS 1-2 SI 1-2 I 1-3
Flawless Internally Flawless Very Very Slightly Included Very Slightly Included Slightly Included Included



April 9, 2026
IGI Report Number LG771639186
Description LABORATORY GROWN DIAMOND
Shape and Cutting Style CUT CORNERED RECTANGULAR MODIFIED BRILLIANT
Measurements 11.23 X 7.87 X 5.32 MM
GRADING RESULTS
Carat Weight 4.08 CARATS
Color Grade E
Clarity Grade VVS 2



ADDITIONAL GRADING INFORMATION

Polish EXCELLENT
Symmetry EXCELLENT
Fluorescence NONE
Inscription(s) LG771639186
Comments: This Laboratory Grown Diamond was created by Chemical Vapor Deposition (CVD) growth process. Type IIa



April 9, 2026
IGI Report No LG771639186
CUT CORNERED RECT. MODIFIED BRILLIANT
4.08 CARATS E
VVS 2
67.6% 65% Thick
Pointed EXCELLENT EXCELLENT NONE
None LG771639186

Comments: This Laboratory Grown Diamond was created by Chemical Vapor Deposition (CVD) growth process. Type IIa