



**ELECTRONIC COPY**

LG771639146  
Report verification at igi.org



April 9, 2026  
IGI Report Number **LG771639146**  
Description **LABORATORY GROWN DIAMOND**  
Shape and Cutting Style **CUT CORNERED  
RECTANGULAR MODIFIED  
BRILLIANT**

Measurements **12.26 X 8.53 X 5.74 MM**

**GRADING RESULTS**

Carat Weight **5.05 CARATS**  
Color Grade **H**  
Clarity Grade **VS 1**

April 9, 2026  
IGI Report Number **LG771639146**  
Description **LABORATORY GROWN DIAMOND**  
Shape and Cutting Style **CUT CORNERED RECTANGULAR  
MODIFIED BRILLIANT**  
Measurements **12.26 X 8.53 X 5.74 MM**

**GRADING RESULTS**

Carat Weight **5.05 CARATS**  
Color Grade **H**  
Clarity Grade **VS 1**

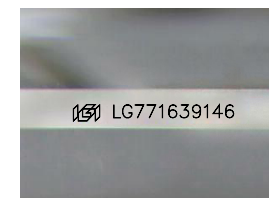
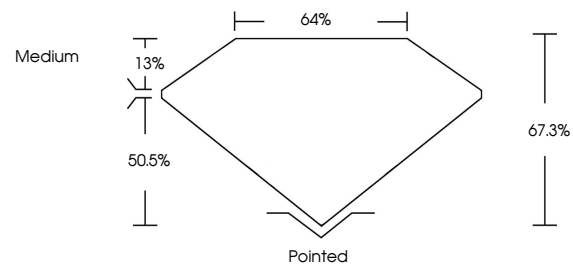
**ADDITIONAL GRADING INFORMATION**

Polish **EXCELLENT**  
Symmetry **EXCELLENT**  
Fluorescence **NONE**

Inscription(s) **IGI LG771639146**

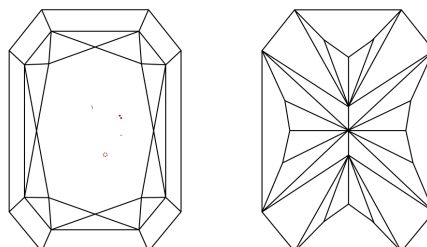
Comments: This Laboratory Grown Diamond was created by Chemical Vapor Deposition (CVD) growth process.  
Type IIa

**PROPORTIONS**



Sample Image Used

**CLARITY CHARACTERISTICS**



**KEY TO SYMBOLS**

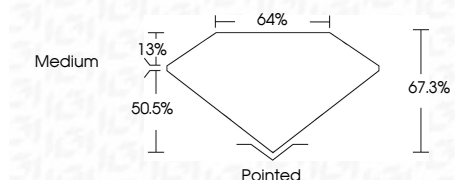
Red symbols indicate internal characteristics.  
Green symbols indicate external characteristics.

**COLOR**

D E F G H I J Faint Very Light Light

**CLARITY**

FL	IF	VS <sup>1-2</sup>	VS <sup>1-2</sup>	SI <sup>1-2</sup>	I <sup>1-3</sup>
Flawless	Internally Flawless	Very Very Slightly Included	Very Slightly Included	Slightly Included	Included



**ADDITIONAL GRADING INFORMATION**

Polish **EXCELLENT**  
Symmetry **EXCELLENT**  
Fluorescence **NONE**  
Inscription(s) **IGI LG771639146**

Comments: This Laboratory Grown Diamond was created by Chemical Vapor Deposition (CVD) growth process.  
Type IIa



April 9, 2026  
IGI Report No LG771639146  
CUT CORNERED RECT. MODIFIED BRILLIANT  
12.26 X 8.53 X 5.74 MM  
5.05 CARATS  
H  
VS 1  
67.3%  
50.5%  
64%  
Medium  
Pointed  
EXCELLENT  
EXCELLENT  
NONE  
IGI LG771639146  
Comments: This Laboratory Grown Diamond was created by Chemical Vapor Deposition (CVD) growth process.  
Type IIa