



**ELECTRONIC COPY**

LG771636637  
Report verification at igi.org



February 4, 2026

IGI Report Number **LG771636637**

Description **LABORATORY GROWN DIAMOND**

Shape and Cutting Style **OVAL BRILLIANT**

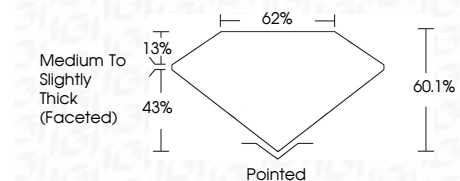
Measurements **9.27 X 6.39 X 3.84 MM**

**GRADING RESULTS**

Carat Weight **1.41 CARAT**

Color Grade **E**

Clarity Grade **VVS 2**



**ADDITIONAL GRADING INFORMATION**

Polish **EXCELLENT**

Symmetry **EXCELLENT**

Fluorescence **NONE**

Inscription(s) **IGI LG771636637**

Comments: This Laboratory Grown Diamond was created by Chemical Vapor Deposition (CVD) growth process. Type IIa



**IGI**

|                           |                           |             |               |       |        |                                    |         |           |           |              |                 |
|---------------------------|---------------------------|-------------|---------------|-------|--------|------------------------------------|---------|-----------|-----------|--------------|-----------------|
| February 4, 2026          | IGI Report No LG771636637 | 1.41 CARAT  | E             | VVS 2 | 60.1%  | 62%                                | Pointed | EXCELLENT | EXCELLENT | NONE         | IGI LG771636637 |
| IGI Report No LG771636637 | 9.27 X 6.39 X 3.84 MM     | Color Grade | Clarity Grade | Table | Girdle | Medium to Slightly Thick (Faceted) | Culet   | Polish    | Symmetry  | Fluorescence | Inscription(s)  |

Comments: This Laboratory Grown Diamond was created by Chemical Vapor Deposition (CVD) growth process. Type IIa

**LABORATORY GROWN DIAMOND REPORT**

February 4, 2026

IGI Report Number **LG771636637**

Description **LABORATORY GROWN DIAMOND**

Shape and Cutting Style **OVAL BRILLIANT**

Measurements **9.27 X 6.39 X 3.84 MM**

**GRADING RESULTS**

Carat Weight **1.41 CARAT**

Color Grade **E**

Clarity Grade **VVS 2**

**ADDITIONAL GRADING INFORMATION**

Polish **EXCELLENT**

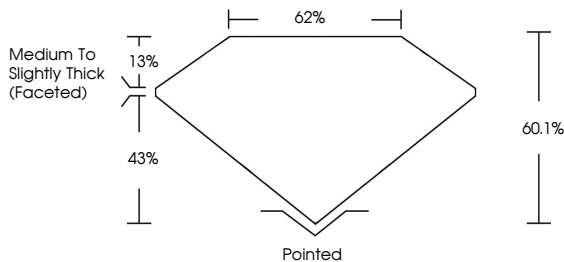
Symmetry **EXCELLENT**

Fluorescence **NONE**

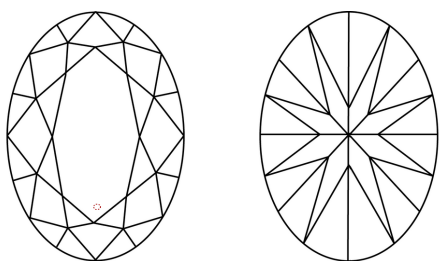
Inscription(s) **IGI LG771636637**

Comments: This Laboratory Grown Diamond was created by Chemical Vapor Deposition (CVD) growth process. Type IIa

**PROPORTIONS**

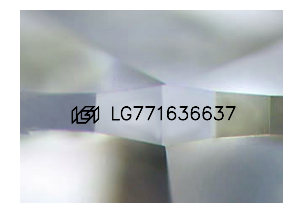


**CLARITY CHARACTERISTICS**



**KEY TO SYMBOLS**

Red symbols indicate internal characteristics.  
Green symbols indicate external characteristics.



Sample Image Used

**COLOR**

|   |   |   |   |   |   |   |       |            |       |
|---|---|---|---|---|---|---|-------|------------|-------|
| D | E | F | G | H | I | J | Faint | Very Light | Light |
|---|---|---|---|---|---|---|-------|------------|-------|

**CLARITY**

|          |                     |                             |                        |                   |                  |
|----------|---------------------|-----------------------------|------------------------|-------------------|------------------|
| FL       | IF                  | VVS <sup>1-2</sup>          | VS <sup>1-2</sup>      | SI <sup>1-2</sup> | I <sup>1-3</sup> |
| Flawless | Internally Flawless | Very Very Slightly Included | Very Slightly Included | Slightly Included | Included         |

