



ELECTRONIC COPY

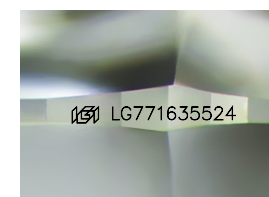
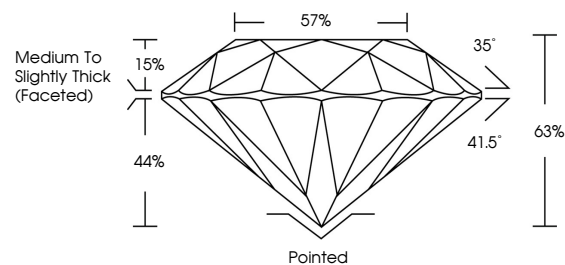
LG771635524 Report verification at igi.org



February 4, 2026 IGI Report Number LG771635524 Description LABORATORY GROWN DIAMOND Shape and Cutting Style ROUND BRILLIANT Measurements 8.14 - 8.20 X 5.14 MM GRADING RESULTS Carat Weight 2.10 CARATS Color Grade E Clarity Grade VVS 2 Cut Grade EXCELLENT

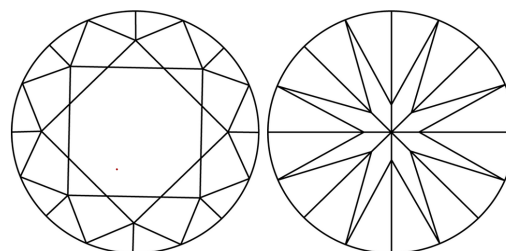
February 4, 2026 IGI Report Number LG771635524 Description LABORATORY GROWN DIAMOND Shape and Cutting Style ROUND BRILLIANT Measurements 8.14 - 8.20 X 5.14 MM

PROPORTIONS



Sample Image Used

CLARITY CHARACTERISTICS



KEY TO SYMBOLS

Red symbols indicate internal characteristics. Green symbols indicate external characteristics.

GRADING RESULTS

Carat Weight 2.10 CARATS Color Grade E Clarity Grade VVS 2 Cut Grade EXCELLENT

ADDITIONAL GRADING INFORMATION

Polish EXCELLENT Symmetry EXCELLENT Fluorescence NONE Inscription(s) IGI LG771635524

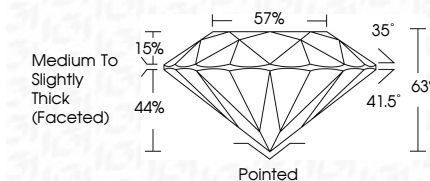
Comments: This Laboratory Grown Diamond was created by Chemical Vapor Deposition (CVD) growth process. Type IIa

COLOR

D E F G H I J Faint Very Light Light

CLARITY

FL IF VVS 1-2 VS 1-2 SI 1-2 I 1-3 Flawless Internally Flawless Very Very Slightly Included Very Slightly Included Slightly Included Included



ADDITIONAL GRADING INFORMATION

Polish EXCELLENT Symmetry EXCELLENT Fluorescence NONE Inscription(s) IGI LG771635524 Comments: This Laboratory Grown Diamond was created by Chemical Vapor Deposition (CVD) growth process. Type IIa



February 4, 2026 IGI Report No LG771635524 ROUND BRILLIANT 8.14 - 8.20 X 5.14 MM 2.10 CARATS E VVS 2 EXCELLENT 65% 57% Medium To Slightly Thick (Faceted) Pointed EXCELLENT EXCELLENT NONE NONE IGI LG771635524 Comments: This Laboratory Grown Diamond was created by Chemical Vapor Deposition (CVD) growth process. Type IIa