



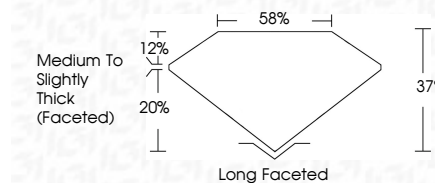
ELECTRONIC COPY

LG771633652
Report verification at igi.org



February 2, 2026
IGI Report Number **LG771633652**
Description **LABORATORY GROWN DIAMOND**
Shape and Cutting Style **PEAR MODIFIED BRILLIANT**
Measurements **9.86 X 5.94 X 2.20 MM**

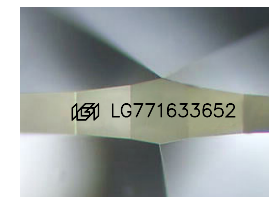
GRADING RESULTS
Carat Weight **1.09 CARAT**
Color Grade **E**
Clarity Grade **VVS 2**



ADDITIONAL GRADING INFORMATION
Polish **VERY GOOD**
Symmetry **VERY GOOD**
Fluorescence **NONE**
Inscription(s) **IGI LG771633652**
Comments: This Laboratory Grown Diamond was created by Chemical Vapor Deposition (CVD) growth process. Type IIa

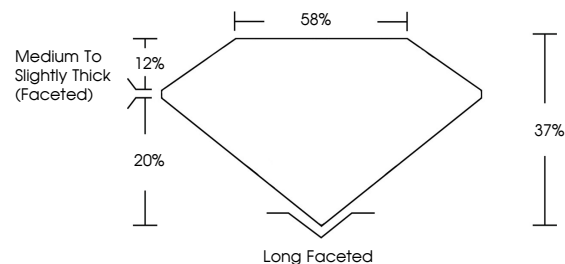


February 2, 2026
IGI Report No LG771633652
PEAR MODIFIED BRILLIANT
9.86 X 5.94 X 2.20 MM
1.09 CARAT
E
VVS 2
37%
20%
85%
Medium to Slightly Thick (Faceted)
Long Faceted
Culet
Polish
Symmetry
Fluorescence
Inscription(s)
VERY GOOD
VERY GOOD
NONE
IGI LG771633652
Comments: This Laboratory Grown Diamond was created by Chemical Vapor Deposition (CVD) growth process. Type IIa

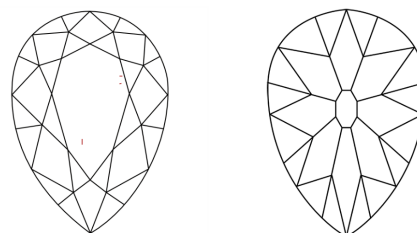


Sample Image Used

PROPORTIONS



CLARITY CHARACTERISTICS



KEY TO SYMBOLS

Red symbols indicate internal characteristics.
Green symbols indicate external characteristics.

COLOR

D E F G H I J Faint Very Light Light

CLARITY

FL	IF	VVS ¹⁻²	VS ¹⁻²	SI ¹⁻²	I ¹⁻³
Flawless	Internally Flawless	Very Very Slightly Included	Very Slightly Included	Slightly Included	Included

