



ELECTRONIC COPY

LG771633545
Report verification at igi.org



February 9, 2026

IGI Report Number **LG771633545**

Description **LABORATORY GROWN DIAMOND**

Shape and Cutting Style **CUT CORNERED
RECTANGULAR MODIFIED
BRILLIANT**

Measurements **13.17 X 8.46 X 5.24 MM**

GRADING RESULTS

Carat Weight **5.06 CARATS**

Color Grade **FANCY VIVID PINK**

Clarity Grade **VS 1**

LABORATORY GROWN DIAMOND REPORT

February 9, 2026

IGI Report Number **LG771633545**

Description **LABORATORY GROWN DIAMOND**

Shape and Cutting Style **CUT CORNERED RECTANGULAR
MODIFIED BRILLIANT**

Measurements **13.17 X 8.46 X 5.24 MM**

GRADING RESULTS

Carat Weight **5.06 CARATS**

Color Grade **FANCY VIVID PINK**

Clarity Grade **VS 1**

ADDITIONAL GRADING INFORMATION

Polish **EXCELLENT**

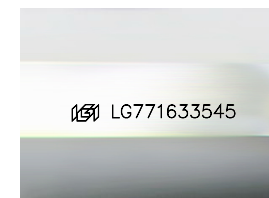
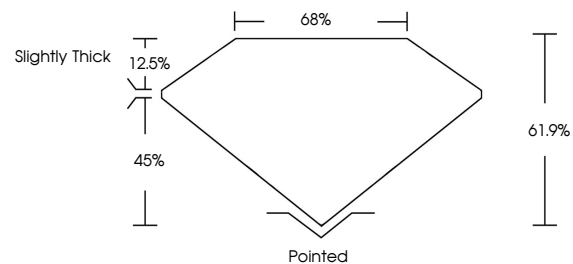
Symmetry **EXCELLENT**

Fluorescence **STRONG**

Inscription(s) **IGI LG771633545**

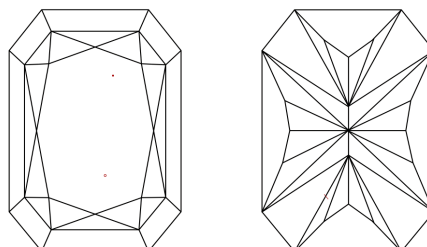
Comments: This Laboratory Grown Diamond was created by Chemical Vapor Deposition (CVD) growth process. Indications of post-growth treatment.

PROPORTIONS



Sample Image Used

CLARITY CHARACTERISTICS



KEY TO SYMBOLS

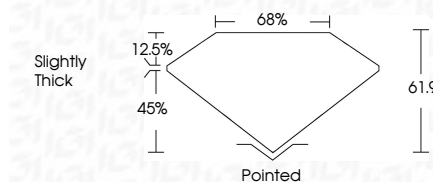
Red symbols indicate internal characteristics.
Green symbols indicate external characteristics.

COLOR

D E F G H I J Faint Very Light Light

CLARITY

FL	IF	VS ¹⁻²	VS ¹⁻²	SI ¹⁻²	I ¹⁻³
Flawless	Internally Flawless	Very Very Slightly Included	Very Slightly Included	Slightly Included	Included



ADDITIONAL GRADING INFORMATION

Polish **EXCELLENT**

Symmetry **EXCELLENT**

Fluorescence **STRONG**

Inscription(s) **IGI LG771633545**

Comments: This Laboratory Grown Diamond was created by Chemical Vapor Deposition (CVD) growth process. Indications of post-growth treatment.



IGI



February 9, 2026
IGI Report No LG771633545
CUT CORNERED RECT. MODIFIED BRILLIANT
13.17 X 8.46 X 5.24 MM
5.06 CARATS
FANCY VIVID PINK
VS 1
61.9%
45%
Slightly Thick
Pointed
EXCELLENT
EXCELLENT
STRONG
IGI LG771633545

Comments: This Laboratory Grown Diamond was created by Chemical Vapor Deposition (CVD) growth process. Indications of post-growth treatment.