



**INTERNATIONAL
GEMOLOGICAL
INSTITUTE**

LABORATORY GROWN DIAMOND REPORT

February 7, 2026
 IGI Report Number **LG771632779**
 Description **LABORATORY GROWN DIAMOND**
 Shape and Cutting Style **ROUND BRILLIANT**
 Measurements **4.77 - 4.79 X 2.96 MM**

GRADING RESULTS

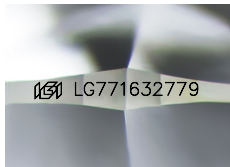
Carat Weight **0.41 CARAT**
 Color Grade **E**
 Clarity Grade **VS 1**
 Cut Grade **IDEAL**

ADDITIONAL GRADING INFORMATION

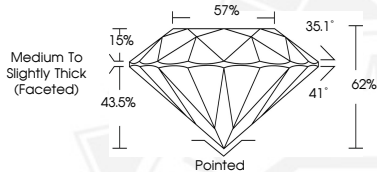
Polish **EXCELLENT**
 Symmetry **EXCELLENT**
 Fluorescence **NONE**
 Inscription(s) **IGI LG771632779**

Comments: As Grown - No indication of post-growth treatment. This Laboratory Grown Diamond was created by High Pressure High Temperature (HPHT) growth process. Type II

ELECTRONIC COPY



Sample Image Used



February 7, 2026
 IGI Report Number **LG771632779**
ROUND BRILLIANT
LABORATORY GROWN DIAMOND
4.77 - 4.79 X 2.96 MM
0.41 CARAT
E
VS 1
IDEAL
EXCELLENT
EXCELLENT
NONE
IGI LG771632779

Comments: As Grown - No indication of post-growth treatment. This Laboratory Grown Diamond was created by High Pressure High Temperature (HPHT) growth process. Type II



February 7, 2026
 IGI Report Number **LG771632779**
ROUND BRILLIANT
LABORATORY GROWN DIAMOND
4.77 - 4.79 X 2.96 MM
0.41 CARAT
E
VS 1
IDEAL
EXCELLENT
EXCELLENT
NONE
IGI LG771632779

Comments: As Grown - No indication of post-growth treatment. This Laboratory Grown Diamond was created by High Pressure High Temperature (HPHT) growth process. Type II



THIS DOCUMENT WAS PRODUCED WITH THE FOLLOWING SECURITY MEASURES: SPECIAL DOCUMENT PAPER, INK SCREENS, WATERMARK, BACKGROUND DESIGNS, HOLOGRAM AND OTHER SECURITY FEATURES NOT LISTED AND DO EXCEED DOCUMENT SECURITY INDUSTRY GUIDELINES.

For terms & conditions and to verify this report, please visit www.igi.org