



**ELECTRONIC COPY**

LG771632744  
Report verification at igi.org



February 5, 2026

IGI Report Number **LG771632744**

Description **LABORATORY GROWN DIAMOND**

Shape and Cutting Style **ROUND BRILLIANT**

Measurements **8.18 - 8.20 X 5.00 MM**

**GRADING RESULTS**

Carat Weight **2.06 CARATS**

Color Grade **E**

Clarity Grade **VS 1**

Cut Grade **IDEAL**

February 5, 2026

IGI Report Number **LG771632744**

Description **LABORATORY GROWN DIAMOND**

Shape and Cutting Style **ROUND BRILLIANT**

Measurements **8.18 - 8.20 X 5.00 MM**

**GRADING RESULTS**

Carat Weight **2.06 CARATS**

Color Grade **E**

Clarity Grade **VS 1**

Cut Grade **IDEAL**

**ADDITIONAL GRADING INFORMATION**

Polish **EXCELLENT**

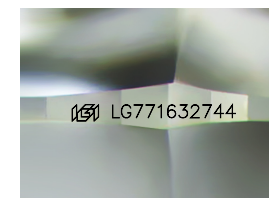
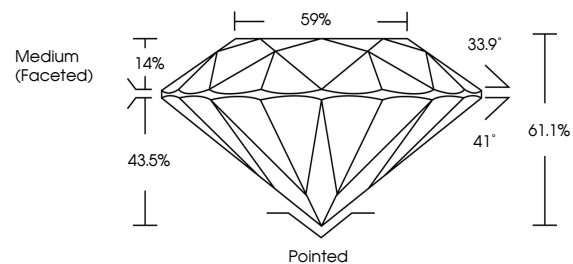
Symmetry **EXCELLENT**

Fluorescence **NONE**

Inscription(s) **IGI LG771632744**

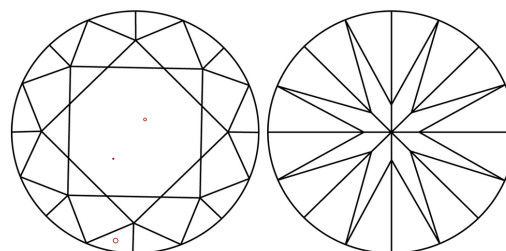
Comments: This Laboratory Grown Diamond was created by Chemical Vapor Deposition (CVD) growth process.  
Type IIa

**PROPORTIONS**



Sample Image Used

**CLARITY CHARACTERISTICS**



**KEY TO SYMBOLS**

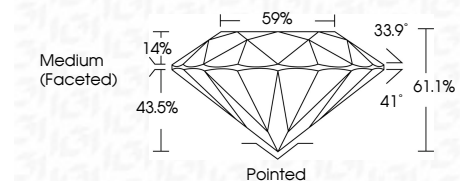
Red symbols indicate internal characteristics.  
Green symbols indicate external characteristics.

**COLOR**

D E F G H I J Faint Very Light Light

**CLARITY**

FL	IF	VS <sup>1-2</sup>	VS <sup>1-2</sup>	SI <sup>1-2</sup>	I <sup>1-3</sup>
Flawless	Internally Flawless	Very Very Slightly Included	Very Slightly Included	Slightly Included	Included



**ADDITIONAL GRADING INFORMATION**

Polish **EXCELLENT**

Symmetry **EXCELLENT**

Fluorescence **NONE**

Inscription(s) **IGI LG771632744**

Comments: This Laboratory Grown Diamond was created by Chemical Vapor Deposition (CVD) growth process.  
Type IIa



**IGI**



February 5, 2026	IGI Report No LG771632744	2.06 CARATS	E	VS 1	IDEAL	61.1%	59%	Medium (Faceted)	Pointed	EXCELLENT	EXCELLENT	NONE	IGI LG771632744
8.18 - 8.20 X 5.00 MM	ROUND BRILLIANT	Carat Weight	Color Grade	Clarity Grade	Cut Grade	Depth	Table	Girdle	Culet	Polish	Symmetry	Fluorescence	Inscription(s)

Comments: This Laboratory Grown Diamond was created by Chemical Vapor Deposition (CVD) growth process.  
Type IIa