



ELECTRONIC COPY

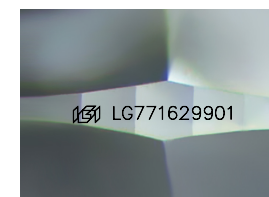
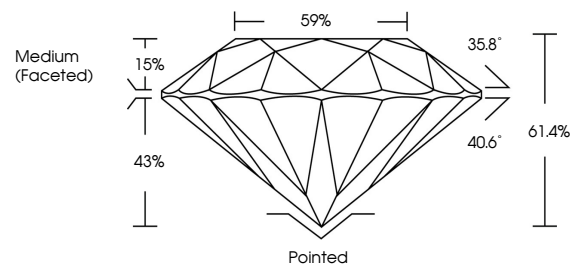
LG771629901
Report verification at igi.org



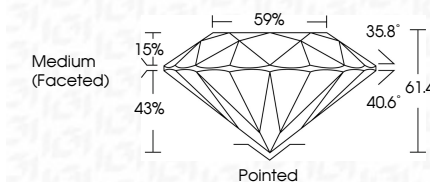
January 31, 2026
IGI Report Number LG771629901
Description LABORATORY GROWN DIAMOND
Shape and Cutting Style ROUND BRILLIANT
Measurements 10.21 - 10.24 X 6.28 MM
GRADING RESULTS
Carat Weight 4.06 CARATS
Color Grade E
Clarity Grade VVS 2
Cut Grade IDEAL

January 31, 2026
IGI Report Number LG771629901
Description LABORATORY GROWN DIAMOND
Shape and Cutting Style ROUND BRILLIANT
Measurements 10.21 - 10.24 X 6.28 MM
GRADING RESULTS
Carat Weight 4.06 CARATS
Color Grade E
Clarity Grade VVS 2
Cut Grade IDEAL

PROPORTIONS



Sample Image Used



ADDITIONAL GRADING INFORMATION
Polish EXCELLENT
Symmetry EXCELLENT
Fluorescence NONE
Inscription(s) IGI LG771629901

Comments: This Laboratory Grown Diamond was created by Chemical Vapor Deposition (CVD) growth process. Type IIa

COLOR

D E F G H I J Faint Very Light Light

CLARITY

FL IF VS 1-2 VS 1-2 SI 1-2 I 1-3
Flawless Internally Flawless Very Very Slightly Included Very Slightly Included Slightly Included Included

ADDITIONAL GRADING INFORMATION

Polish EXCELLENT
Symmetry EXCELLENT
Fluorescence NONE
Inscription(s) IGI LG771629901
Comments: This Laboratory Grown Diamond was created by Chemical Vapor Deposition (CVD) growth process. Type IIa



IGI

January 31, 2026
IGI Report No LG771629901
ROUND BRILLIANT
10.21 - 10.24 X 6.28 MM
4.06 CARATS
E
VVS 2
IDEAL
61.4%
59%
Medium (Faceted)
Pointed
EXCELLENT
EXCELLENT
NONE
IGI LG771629901
Comments: This Laboratory Grown Diamond was created by Chemical Vapor Deposition (CVD) growth process. Type IIa