



**ELECTRONIC COPY**

LG771629103  
Report verification at igi.org



February 6, 2026

IGI Report Number **LG771629103**

Description **LABORATORY GROWN DIAMOND**

Shape and Cutting Style **OVAL BRILLIANT**

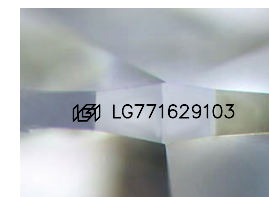
Measurements **12.61 X 8.71 X 5.65 MM**

**GRADING RESULTS**

Carat Weight **4.07 CARATS**

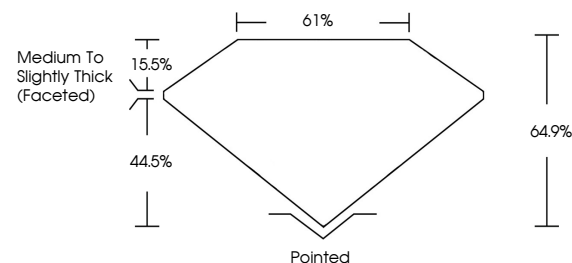
Color Grade **F**

Clarity Grade **VVS 2**

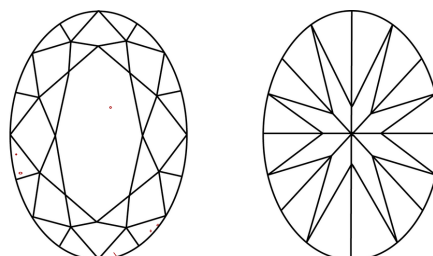


Sample Image Used

**PROPORTIONS**



**CLARITY CHARACTERISTICS**



**KEY TO SYMBOLS**

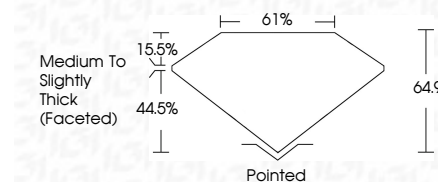
Red symbols indicate internal characteristics.  
Green symbols indicate external characteristics.

**COLOR**

D E F G H I J Faint Very Light Light

**CLARITY**

FL	IF	VVS <sup>1-2</sup>	VS <sup>1-2</sup>	SI <sup>1-2</sup>	I <sup>1-3</sup>
Flawless	Internally Flawless	Very Very Slightly Included	Very Slightly Included	Slightly Included	Included



**ADDITIONAL GRADING INFORMATION**

Polish **EXCELLENT**

Symmetry **EXCELLENT**

Fluorescence **NONE**

Inscription(s) **IGI LG771629103**

Comments: This Laboratory Grown Diamond was created by Chemical Vapor Deposition (CVD) growth process. Type IIa



**IGI**



February 6, 2026	IGI Report No LG771629103	<b>4.07 CARATS</b>	<b>F</b>
<b>OVAL BRILLIANT</b>	<b>12.61 X 8.71 X 5.65 MM</b>	<b>VVS 2</b>	<b>64.9%</b>
Carat Weight	Color Grade	Depth	Table
4.07	F	44.5%	61%
Clarity Grade	Measurements	Grades	Culet
VVS 2	12.61 X 8.71 X 5.65 MM	Medium to Slightly Thick (Faceted)	Pointed
Depth	Symmetry	Fluorescence	Polish
44.5%	EXCELLENT	NONE	EXCELLENT
Table	Inscription(s)		
61%	IGI LG771629103		

Comments: This Laboratory Grown Diamond was created by Chemical Vapor Deposition (CVD) growth process. Type IIa