



ELECTRONIC COPY

LG771627911
Report verification at igi.org



February 9, 2026
IGI Report Number **LG771627911**
Description **LABORATORY GROWN DIAMOND**
Shape and Cutting Style **CUSHION MODIFIED BRILLIANT**
Measurements **15.31 X 11.01 X 7.12 MM**
GRADING RESULTS
Carat Weight **11.57 CARATS**
Color Grade **FANCY INTENSE BLUE GREEN**
Clarity Grade **VVS 2**

February 9, 2026
IGI Report Number **LG771627911**
Description **LABORATORY GROWN DIAMOND**
Shape and Cutting Style **CUSHION MODIFIED BRILLIANT**
Measurements **15.31 X 11.01 X 7.12 MM**

GRADING RESULTS

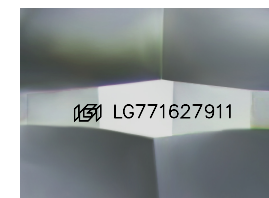
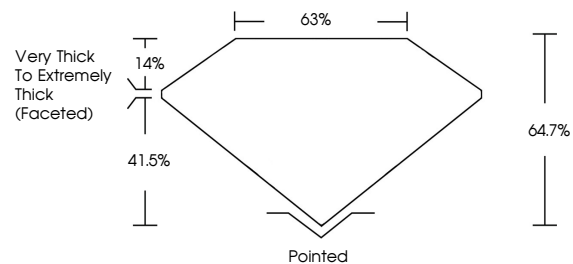
Carat Weight **11.57 CARATS**
Color Grade **FANCY INTENSE BLUE GREEN**
Clarity Grade **VVS 2**

ADDITIONAL GRADING INFORMATION

Polish **EXCELLENT**
Symmetry **EXCELLENT**
Fluorescence **NONE**
Inscription(s) **IGI LG771627911**

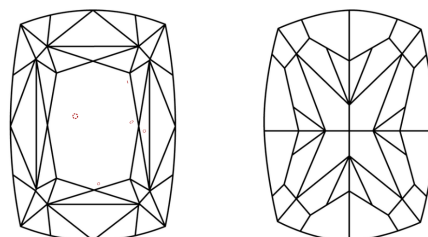
Comments: This Laboratory Grown Diamond was created by Chemical Vapor Deposition (CVD) growth process.
Indications of post-growth treatment.

PROPORTIONS



Sample Image Used

CLARITY CHARACTERISTICS



KEY TO SYMBOLS

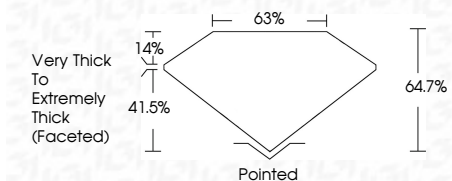
Red symbols indicate internal characteristics.
Green symbols indicate external characteristics.

COLOR

D E F G H I J Faint Very Light Light

CLARITY

FL	IF	VVS ¹⁻²	VS ¹⁻²	SI ¹⁻²	I ¹⁻³
Flawless	Internally Flawless	Very Very Slightly Included	Very Slightly Included	Slightly Included	Included



ADDITIONAL GRADING INFORMATION

Polish **EXCELLENT**
Symmetry **EXCELLENT**
Fluorescence **NONE**
Inscription(s) **IGI LG771627911**
Comments: This Laboratory Grown Diamond was created by Chemical Vapor Deposition (CVD) growth process.
Indications of post-growth treatment.



February 9, 2026
IGI Report No **LG771627911**
CUSHION MODIFIED BRILLIANT
15.31 X 11.01 X 7.12 MM
Carat Weight **11.57 CARATS**
Color Grade **FANCY INTENSE BLUE GREEN**
Clarity Grade **VVS 2**
Depth **64.7%**
Table **63%**
Girdle **Very Thick to Extremely Thick (Faceted)**
Culet **Pointed**
Polish **EXCELLENT**
Symmetry **EXCELLENT**
Fluorescence **NONE**
Inscription(s) **IGI LG771627911**
Comments: This Laboratory Grown Diamond was created by Chemical Vapor Deposition (CVD) growth process.
Indications of post-growth treatment.