



**ELECTRONIC COPY**

LG771627878  
Report verification at igi.org



February 11, 2026  
IGI Report Number **LG771627878**  
Description **LABORATORY GROWN DIAMOND**  
Shape and Cutting Style **SQUARE CUSHION MODIFIED BRILLIANT**  
Measurements **7.56 X 7.40 X 5.05 MM**  
**GRADING RESULTS**  
Carat Weight **2.86 CARATS**  
Color Grade **FANCY BLUE**  
Clarity Grade **VS 1**

February 11, 2026  
IGI Report Number **LG771627878**  
Description **LABORATORY GROWN DIAMOND**  
Shape and Cutting Style **SQUARE CUSHION MODIFIED BRILLIANT**  
Measurements **7.56 X 7.40 X 5.05 MM**

**GRADING RESULTS**

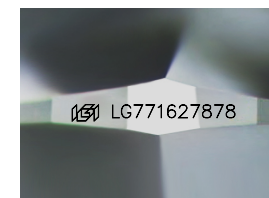
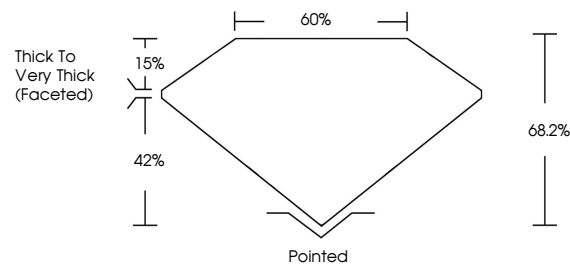
Carat Weight **2.86 CARATS**  
Color Grade **FANCY BLUE**  
Clarity Grade **VS 1**

**ADDITIONAL GRADING INFORMATION**

Polish **EXCELLENT**  
Symmetry **EXCELLENT**  
Fluorescence **NONE**  
Inscription(s) **IGI LG771627878**

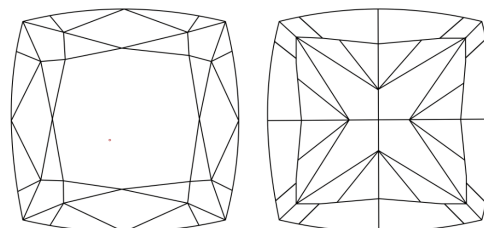
Comments: This Laboratory Grown Diamond was created by Chemical Vapor Deposition (CVD) growth process.  
Indications of post-growth treatment.

**PROPORTIONS**



Sample Image Used

**CLARITY CHARACTERISTICS**



**KEY TO SYMBOLS**

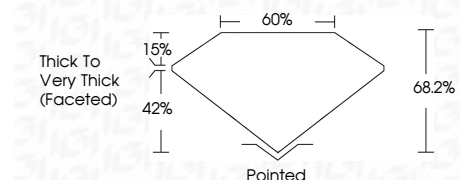
Red symbols indicate internal characteristics.  
Green symbols indicate external characteristics.

**COLOR**

D E F G H I J Faint Very Light Light

**CLARITY**

FL	IF	VS <sup>1-2</sup>	VS <sup>1-2</sup>	SI <sup>1-2</sup>	I <sup>1-3</sup>
Flawless	Internally Flawless	Very Very Slightly Included	Very Slightly Included	Slightly Included	Included



**ADDITIONAL GRADING INFORMATION**

Polish **EXCELLENT**  
Symmetry **EXCELLENT**  
Fluorescence **NONE**  
Inscription(s) **IGI LG771627878**  
Comments: This Laboratory Grown Diamond was created by Chemical Vapor Deposition (CVD) growth process.  
Indications of post-growth treatment.



February 11, 2026  
IGI Report No LG771627878  
**SQUARE CUSHION MODIFIED BRILLIANT**  
**2.86 CARATS**  
**FANCY BLUE**  
**VS 1**  
**68.2%**  
**42%**  
**15%**  
**Thick to Very Thick (Faceted)**  
**Pointed**  
**EXCELLENT**  
**EXCELLENT**  
**NONE**  
**IGI LG771627878**  
Comments: This Laboratory Grown Diamond was created by Chemical Vapor Deposition (CVD) growth process.  
Indications of post-growth treatment.