



ELECTRONIC COPY

LG771627829
Report verification at igi.org



February 11, 2026
IGI Report Number **LG771627829**
Description **LABORATORY GROWN DIAMOND**
Shape and Cutting Style **CUSHION MODIFIED BRILLIANT**
Measurements **13.01 X 9.38 X 6.10 MM**
GRADING RESULTS
Carat Weight **7.00 CARATS**
Color Grade **FANCY INTENSE BLuish GREEN**
Clarity Grade **VS 2**

February 11, 2026
IGI Report Number **LG771627829**
Description **LABORATORY GROWN DIAMOND**
Shape and Cutting Style **CUSHION MODIFIED BRILLIANT**
Measurements **13.01 X 9.38 X 6.10 MM**

GRADING RESULTS

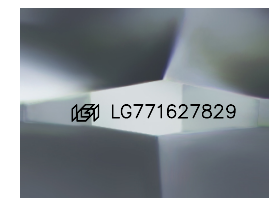
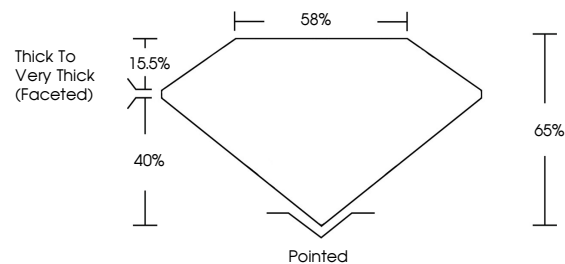
Carat Weight **7.00 CARATS**
Color Grade **FANCY INTENSE BLuish GREEN**
Clarity Grade **VS 2**

ADDITIONAL GRADING INFORMATION

Polish **EXCELLENT**
Symmetry **EXCELLENT**
Fluorescence **NONE**
Inscription(s) **(IGI) LG771627829**

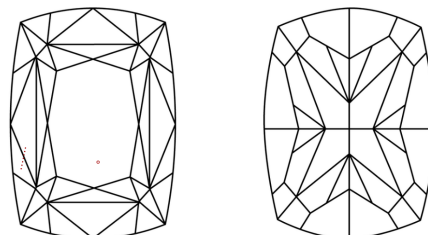
Comments: This Laboratory Grown Diamond was created by Chemical Vapor Deposition (CVD) growth process.
Indications of post-growth treatment.

PROPORTIONS



Sample Image Used

CLARITY CHARACTERISTICS



KEY TO SYMBOLS

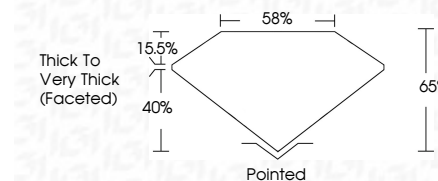
Red symbols indicate internal characteristics.
Green symbols indicate external characteristics.

COLOR

D E F G H I J Faint Very Light Light

CLARITY

FL	IF	VS ¹⁻²	VS ¹⁻²	SI ¹⁻²	I ¹⁻³
Flawless	Internally Flawless	Very Very Slightly Included	Very Slightly Included	Slightly Included	Included



ADDITIONAL GRADING INFORMATION

Polish **EXCELLENT**
Symmetry **EXCELLENT**
Fluorescence **NONE**
Inscription(s) **(IGI) LG771627829**
Comments: This Laboratory Grown Diamond was created by Chemical Vapor Deposition (CVD) growth process.
Indications of post-growth treatment.



February 11, 2026
IGI Report No LG771627829
CUSHION MODIFIED BRILLIANT
7.00 CARATS
Carat Weight
FANCY INTENSE BLuish GREEN
Color Grade
VS 2
Clarity Grade
65%
85%
Thick to Very Thick (Faceted)
Pointed
EXCELLENT
EXCELLENT
NONE
None
Inscriptions(s)
(IGI) LG771627829
Comments: This Laboratory Grown Diamond was created by Chemical Vapor Deposition (CVD) growth process.
Indications of post-growth treatment.