



**ELECTRONIC COPY**

LG771627726  
Report verification at igi.org



February 11, 2026  
IGI Report Number **LG771627726**  
Description **LABORATORY GROWN DIAMOND**  
Shape and Cutting Style **RECTANGULAR CUSHION MIXED CUT**  
Measurements **17.06 X 8.94 X 5.85 MM**  
**GRADING RESULTS**  
Carat Weight **8.53 CARATS**  
Color Grade **FANCY INTENSE PINK**  
Clarity Grade **VS 1**

February 11, 2026  
IGI Report Number **LG771627726**  
Description **LABORATORY GROWN DIAMOND**  
Shape and Cutting Style **RECTANGULAR CUSHION MIXED CUT**  
Measurements **17.06 X 8.94 X 5.85 MM**

**GRADING RESULTS**

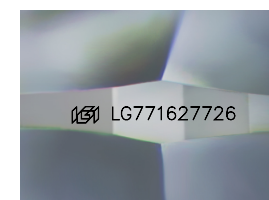
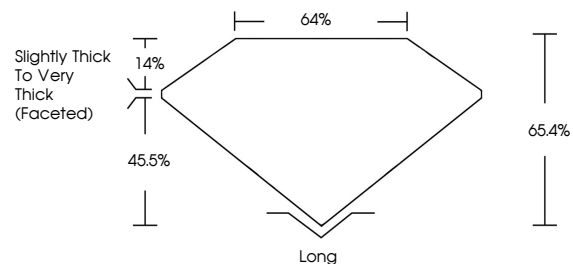
Carat Weight **8.53 CARATS**  
Color Grade **FANCY INTENSE PINK**  
Clarity Grade **VS 1**

**ADDITIONAL GRADING INFORMATION**

Polish **EXCELLENT**  
Symmetry **EXCELLENT**  
Fluorescence **STRONG**  
Inscription(s) **IGI LG771627726**

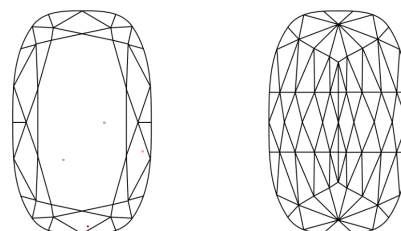
Comments: This Laboratory Grown Diamond was created by Chemical Vapor Deposition (CVD) growth process.  
Indications of post-growth treatment.

**PROPORTIONS**



Sample Image Used

**CLARITY CHARACTERISTICS**



**KEY TO SYMBOLS**

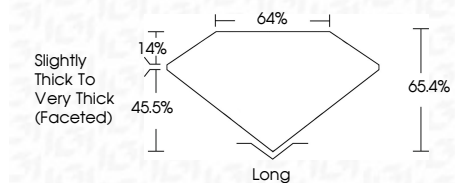
Red symbols indicate internal characteristics.  
Green symbols indicate external characteristics.

**COLOR**

D E F G H I J Faint Very Light Light

**CLARITY**

FL	IF	VS <sup>1-2</sup>	VS <sup>1-2</sup>	SI <sup>1-2</sup>	I <sup>1-3</sup>
Flawless	Internally Flawless	Very Very Slightly Included	Very Slightly Included	Slightly Included	Included



**ADDITIONAL GRADING INFORMATION**

Polish **EXCELLENT**  
Symmetry **EXCELLENT**  
Fluorescence **STRONG**  
Inscription(s) **IGI LG771627726**  
Comments: This Laboratory Grown Diamond was created by Chemical Vapor Deposition (CVD) growth process.  
Indications of post-growth treatment.



February 11, 2026  
IGI Report No LG771627726  
RECTANGULAR CUSHION MIXED CUT  
17.06 X 8.94 X 5.85 MM  
8.53 CARATS  
FANCY INTENSE PINK  
VS 1  
65.4%  
45.5%  
Slightly Thick To Very Thick (Faceted)  
Long  
EXCELLENT  
EXCELLENT  
STRONG  
IGI LG771627726  
Comments: This Laboratory Grown Diamond was created by Chemical Vapor Deposition (CVD) growth process.  
Indications of post-growth treatment.