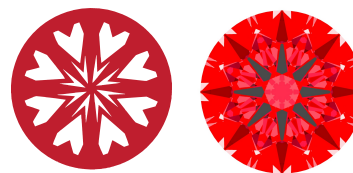




Light Performance Grade: Exceptional



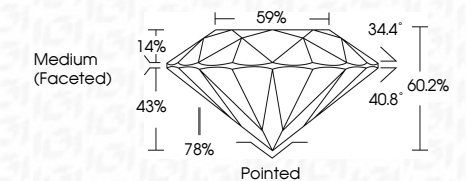
Structured Light Environment Representation



CLARITY table with categories: FL, IF, VS 1-2, VS 1-2, SI 1-2, I 1-3



February 2, 2026 IGI Report Number LG771627332 Description LABORATORY GROWN DIAMOND Shape and Cutting Style ROUND BRILLIANT Measurements 9.14 - 9.17 X 5.52 MM GRADING RESULTS Carat Weight 2.82 CARATS Color Grade D Clarity Grade VVS 2 Cut Grade IDEAL



ADDITIONAL GRADING INFORMATION Polish EXCELLENT Symmetry EXCELLENT Fluorescence NONE Inscription(s) IGI LG771627332 Comments: HEARTS & ARROWS This Laboratory Grown Diamond was created by Chemical Vapor Deposition (CVD) growth process. Type IIa



Summary table with columns: February 2, 2026, IGI Report No LG771627332, ROUND BRILLIANT, 2.82 CARATS, D, VVS 2, IDEAL, 60.2%, 59%, Medium (Faceted), Pointed, EXCELLENT, EXCELLENT, NONE, IGI LG771627332

ELECTRONIC COPY LABORATORY GROWN DIAMOND REPORT

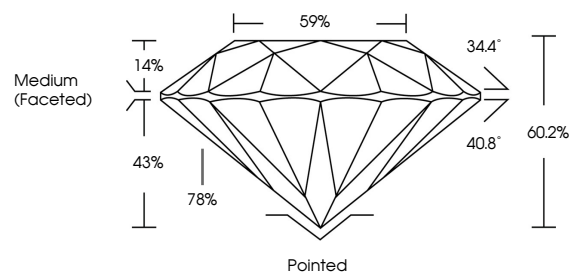
February 2, 2026 IGI Report Number LG771627332 Description LABORATORY GROWN DIAMOND Shape and Cutting Style ROUND BRILLIANT Measurements 9.14 - 9.17 x 5.52 mm

GRADING RESULTS Carat Weight 2.82 CARATS Color Grade D Clarity Grade VVS 2 Cut Grade IDEAL

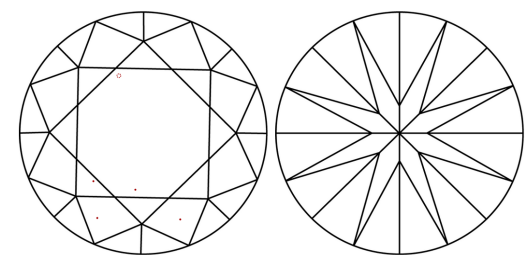
ADDITIONAL GRADING INFORMATION Polish EXCELLENT Symmetry EXCELLENT Fluorescence NONE Inscription(s) IGI LG771627332

Comments: HEARTS & ARROWS This Laboratory Grown Diamond was created by Chemical Vapor Deposition (CVD) growth process. Type IIa

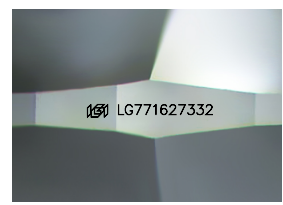
PROPORTIONS



CLARITY CHARACTERISTICS



KEY TO SYMBOLS Red symbols indicate internal characteristics. Green symbols indicate external characteristics.



Sample Image Used

