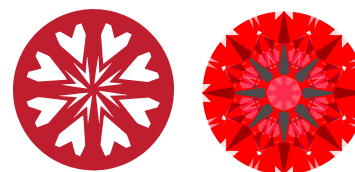




Light Performance Grade: Exceptional



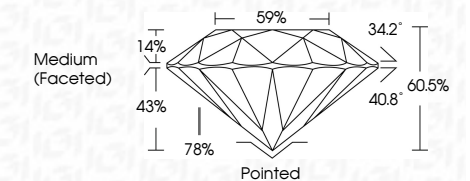
Structured Light Environment Representation



CLARITY table with categories: FL, IF, VS 1-2, VS 1-2, SI 1-2, I 1-3 and corresponding descriptions.



February 2, 2026
IGI Report Number: LG771627275
Description: LABORATORY GROWN DIAMOND
Shape and Cutting Style: ROUND BRILLIANT
Measurements: 9.31 - 9.35 X 5.65 MM
GRADING RESULTS
Carat Weight: 3.02 CARATS
Color Grade: D
Clarity Grade: VS 1
Cut Grade: IDEAL



ADDITIONAL GRADING INFORMATION
Polish: EXCELLENT
Symmetry: EXCELLENT
Fluorescence: NONE
Inscription(s): IGI LG771627275
Comments: HEARTS & ARROWS
This Laboratory Grown Diamond was created by Chemical Vapor Deposition (CVD) growth process. Type IIa



Summary table of grading results: 3.02 CARATS, D, VS 1, IDEAL, 60.5%, 59%, Medium (Faceted), EXCELLENT, EXCELLENT, NONE, IGI LG771627275

ELECTRONIC COPY
LABORATORY GROWN DIAMOND REPORT

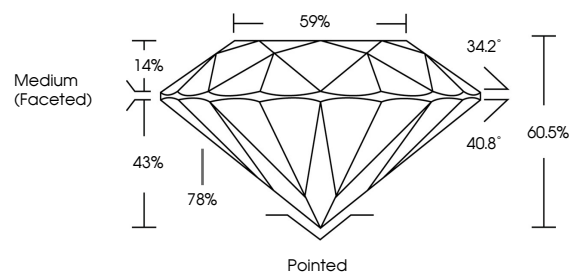
February 2, 2026
IGI Report Number: LG771627275
Description: LABORATORY GROWN DIAMOND
Shape and Cutting Style: ROUND BRILLIANT
Measurements: 9.31 - 9.35 x 5.65 mm

GRADING RESULTS
Carat Weight: 3.02 CARATS
Color Grade: D
Clarity Grade: VS 1
Cut Grade: IDEAL

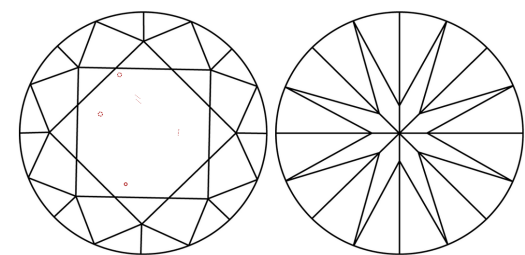
ADDITIONAL GRADING INFORMATION
Polish: EXCELLENT
Symmetry: EXCELLENT
Fluorescence: NONE
Inscription(s): IGI LG771627275

Comments: HEARTS & ARROWS
This Laboratory Grown Diamond was created by Chemical Vapor Deposition (CVD) growth process. Type IIa

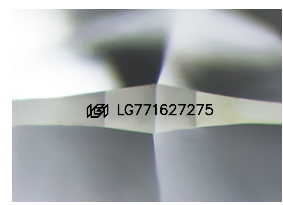
PROPORTIONS



CLARITY CHARACTERISTICS



KEY TO SYMBOLS
Red symbols indicate internal characteristics.
Green symbols indicate external characteristics.



Sample Image Used

