



ELECTRONIC COPY

LG771625466
Report verification at igi.org



February 7, 2026

IGI Report Number LG771625466

Description LABORATORY GROWN DIAMOND

Shape and Cutting Style ROUND BRILLIANT

Measurements 9.80 - 9.83 X 5.98 MM

GRADING RESULTS

Carat Weight 3.56 CARATS

Color Grade E

Clarity Grade VS 1

Cut Grade IDEAL

February 7, 2026

IGI Report Number LG771625466

Description LABORATORY GROWN DIAMOND

Shape and Cutting Style ROUND BRILLIANT

Measurements 9.80 - 9.83 X 5.98 MM

GRADING RESULTS

Carat Weight 3.56 CARATS

Color Grade E

Clarity Grade VS 1

Cut Grade IDEAL

ADDITIONAL GRADING INFORMATION

Polish EXCELLENT

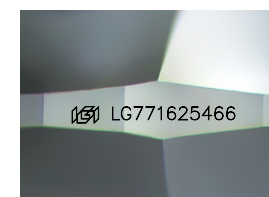
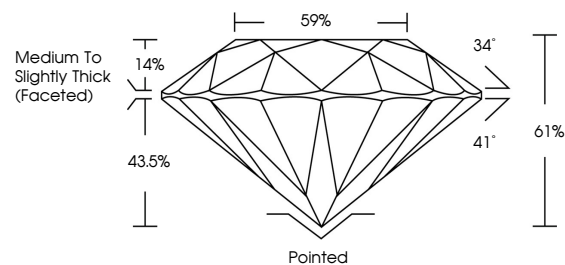
Symmetry EXCELLENT

Fluorescence NONE

Inscription(s) LG771625466

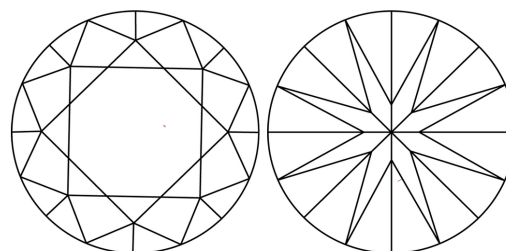
Comments: This Laboratory Grown Diamond was created by Chemical Vapor Deposition (CVD) growth process. Type IIa

PROPORTIONS



Sample Image Used

CLARITY CHARACTERISTICS



KEY TO SYMBOLS

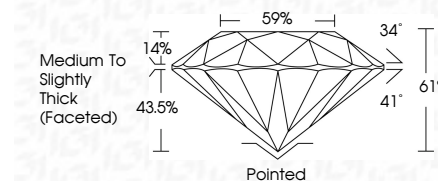
Red symbols indicate internal characteristics. Green symbols indicate external characteristics.

COLOR

D E F G H I J Faint Very Light Light

CLARITY

FL IF VS 1-2 VS 2-3 SI 1-2 I 1-3
Flawless Internally Flawless Very Very Slightly Included Very Slightly Included Slightly Included Included



ADDITIONAL GRADING INFORMATION

Polish EXCELLENT

Symmetry EXCELLENT

Fluorescence NONE

Inscription(s) LG771625466

Comments: This Laboratory Grown Diamond was created by Chemical Vapor Deposition (CVD) growth process. Type IIa



Summary of report details including date, report number, description, measurements, grading results (3.56 CARATS, E, VS 1, IDEAL), and additional information (EXCELLENT Polish/Symmetry, NONE Fluorescence, LG771625466 inscription).