



ELECTRONIC COPY

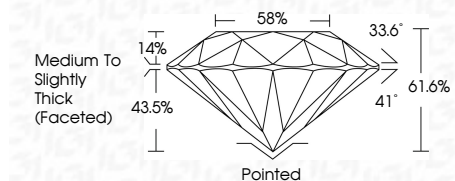
LG771624895
Report verification at igi.org



February 2, 2026
IGI Report Number LG771624895
Description LABORATORY GROWN DIAMOND
Shape and Cutting Style ROUND BRILLIANT
Measurements 6.41 - 6.43 X 3.95 MM

GRADING RESULTS

Carat Weight 1.01 CARAT
Color Grade D
Clarity Grade VS 1
Cut Grade IDEAL

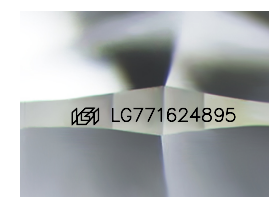


ADDITIONAL GRADING INFORMATION

Polish EXCELLENT
Symmetry EXCELLENT
Fluorescence NONE
Inscription(s) IGI LG771624895
Comments: This Laboratory Grown Diamond was created by Chemical Vapor Deposition (CVD) growth process. Type IIa

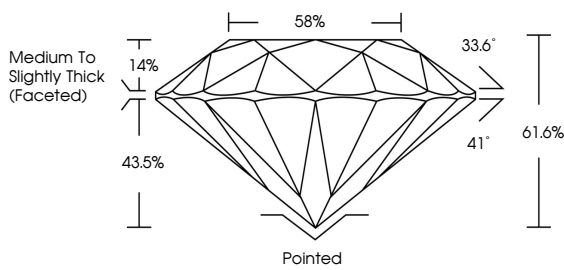


February 2, 2026
IGI Report No LG771624895
ROUND BRILLIANT
6.41 - 6.43 X 3.95 MM
1.01 CARAT
D
VS 1
IDEAL
61.6%
88%
Medium To Slightly Thick (Faceted)
Pointed
EXCELLENT
EXCELLENT
NONE
IGI LG771624895
Comments: This Laboratory Grown Diamond was created by Chemical Vapor Deposition (CVD) growth process. Type IIa



Sample Image Used

PROPORTIONS



COLOR

D E F G H I J Faint Very Light Light

CLARITY

FL IF VS 1-2 VS 2-3 SI 1-2 I 1-3
Flawless Internally Flawless Very Very Slightly Included Very Slightly Included Slightly Included Included

