



ELECTRONIC COPY

LG771623716
Report verification at igi.org



February 3, 2026

IGI Report Number **LG771623716**

Description **LABORATORY GROWN DIAMOND**

Shape and Cutting Style **PRINCESS CUT**

Measurements **7.18 X 7.00 X 5.14 MM**

GRADING RESULTS

Carat Weight **2.28 CARATS**

Color Grade **E**

Clarity Grade **VS 2**

February 3, 2026
IGI Report Number **LG771623716**
Description **LABORATORY GROWN DIAMOND**
Shape and Cutting Style **PRINCESS CUT**
Measurements **7.18 X 7.00 X 5.14 MM**

GRADING RESULTS

Carat Weight **2.28 CARATS**

Color Grade **E**

Clarity Grade **VS 2**

ADDITIONAL GRADING INFORMATION

Polish **EXCELLENT**

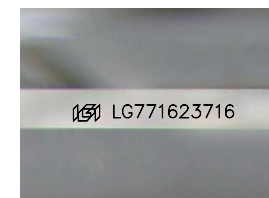
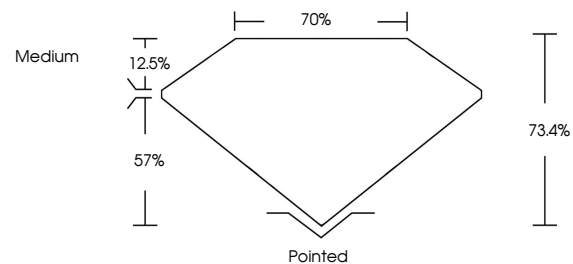
Symmetry **EXCELLENT**

Fluorescence **NONE**

Inscription(s) **IGI LG771623716**

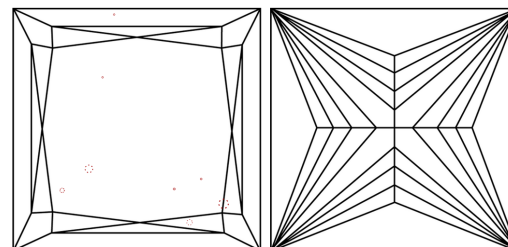
Comments: This Laboratory Grown Diamond was created by Chemical Vapor Deposition (CVD) growth process. Type IIa

PROPORTIONS



Sample Image Used

CLARITY CHARACTERISTICS



KEY TO SYMBOLS

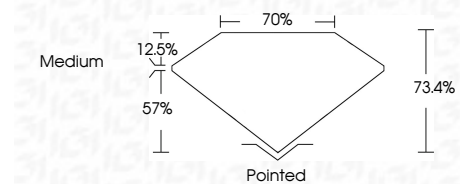
Red symbols indicate internal characteristics.
Green symbols indicate external characteristics.

COLOR

D E F G H I J Faint Very Light Light

CLARITY

FL	IF	VS ¹⁻²	VS ¹⁻²	SI ¹⁻²	I ¹⁻³
Flawless	Internally Flawless	Very Very Slightly Included	Very Slightly Included	Slightly Included	Included



ADDITIONAL GRADING INFORMATION

Polish **EXCELLENT**

Symmetry **EXCELLENT**

Fluorescence **NONE**

Inscription(s) **IGI LG771623716**

Comments: This Laboratory Grown Diamond was created by Chemical Vapor Deposition (CVD) growth process. Type IIa



IGI



February 3, 2026
IGI Report No LG771623716
PRINCESS CUT
7.18 X 7.00 X 5.14 MM
2.28 CARATS
E
VS 2
73.4%
70%
Medium
Pointed
EXCELLENT
EXCELLENT
NONE
IGI LG771623716
Comments: This Laboratory Grown Diamond was created by Chemical Vapor Deposition (CVD) growth process. Type IIa