



ELECTRONIC COPY

LG771622205
Report verification at igi.org



February 1, 2026

IGI Report Number **LG771622205**

Description **LABORATORY GROWN DIAMOND**

Shape and Cutting Style **PRINCESS CUT**

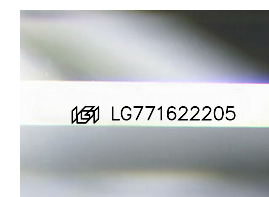
Measurements **5.62 X 5.50 X 3.95 MM**

GRADING RESULTS

Carat Weight **1.05 CARAT**

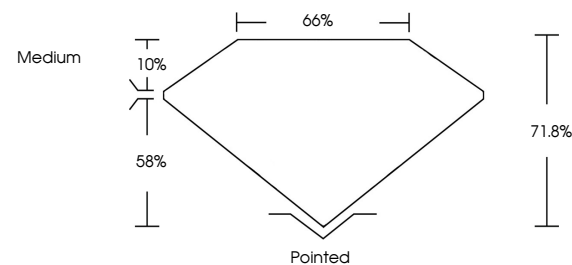
Color Grade **D**

Clarity Grade **VS 1**

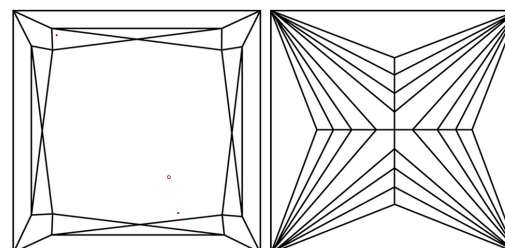


Sample Image Used

PROPORTIONS



CLARITY CHARACTERISTICS



KEY TO SYMBOLS

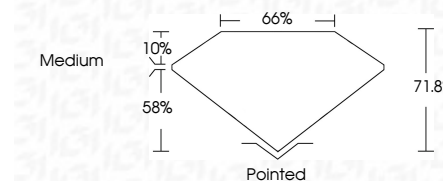
Red symbols indicate internal characteristics.
Green symbols indicate external characteristics.

COLOR

D E F G H I J Faint Very Light Light

CLARITY

FL	IF	VS ¹⁻²	VS ¹⁻²	SI ¹⁻²	I ¹⁻³
Flawless	Internally Flawless	Very Very Slightly Included	Very Slightly Included	Slightly Included	Included



ADDITIONAL GRADING INFORMATION

Polish **EXCELLENT**

Symmetry **EXCELLENT**

Fluorescence **NONE**

Inscription(s) **IGI LG771622205**

Comments: This Laboratory Grown Diamond was created by Chemical Vapor Deposition (CVD) growth process. Type IIa



IGI



February 1, 2026	1.05 CARAT	D	VS 1	71.8%	66%	Medium	Pointed
IGI Report No LG771622205	1.05 CARAT	D	VS 1	71.8%	66%	Medium	Pointed
PRINCESS CUT	1.05 CARAT	D	VS 1	71.8%	66%	Medium	Pointed
5.62 X 5.50 X 3.95 MM	1.05 CARAT	D	VS 1	71.8%	66%	Medium	Pointed
Color Grade	D						
Clarity Grade	VS 1						
Depth	71.8%						
Table	66%						
Girdle	Medium						
Culet	Pointed						
Polish	EXCELLENT						
Symmetry	EXCELLENT						
Fluorescence	NONE						
Inscription(s)	IGI LG771622205						

Comments: This Laboratory Grown Diamond was created by Chemical Vapor Deposition (CVD) growth process. Type IIa