



February 2, 2026

IGI Report Number **LG771615704**

**ROUND BRILLIANT
LABORATORY GROWN DIAMOND
4.92 - 4.95 X 2.95 MM**

**0.43 CARAT
D
VVS 2
IDEAL
EXCELLENT
EXCELLENT
NONE
IGI LG771615704**

Comments: This Laboratory Grown Diamond was created by Chemical Vapor Deposition (CVD) growth process. Type IIa

LABORATORY GROWN DIAMOND REPORT

February 2, 2026
IGI Report Number **LG771615704**
Description **LABORATORY GROWN DIAMOND**
Shape and Cutting Style **ROUND BRILLIANT**
Measurements **4.92 - 4.95 X 2.95 MM**

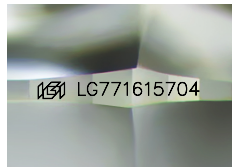
GRADING RESULTS

Carat Weight **0.43 CARAT**
Color Grade **D**
Clarity Grade **VVS 2**
Cut Grade **IDEAL**

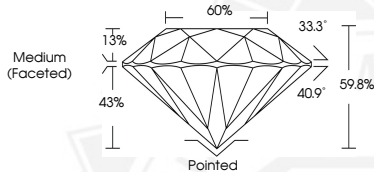
ADDITIONAL GRADING INFORMATION

Polish **EXCELLENT**
Symmetry **EXCELLENT**
Fluorescence **NONE**
Inscription(s) **IGI LG771615704**

Comments: This Laboratory Grown Diamond was created by Chemical Vapor Deposition (CVD) growth process. Type IIa



Sample Image Used



February 2, 2026

IGI Report Number **LG771615704**

**ROUND BRILLIANT
LABORATORY GROWN DIAMOND
4.92 - 4.95 X 2.95 MM**

**0.43 CARAT
D
VVS 2
IDEAL
EXCELLENT
EXCELLENT
NONE
IGI LG771615704**

Comments: This Laboratory Grown Diamond was created by Chemical Vapor Deposition (CVD) growth process. Type IIa



THIS DOCUMENT WAS PRODUCED WITH THE FOLLOWING SECURITY MEASURES: SPECIAL DOCUMENT PAPER, INK SCREENS, WATERMARK, BACKGROUND DESIGNS, HOLOGRAM AND OTHER SECURITY FEATURES NOT LISTED AND DO EXCEED DOCUMENT SECURITY INDUSTRY GUIDELINES.