



**ELECTRONIC COPY**

LG771615583  
Report verification at igi.org

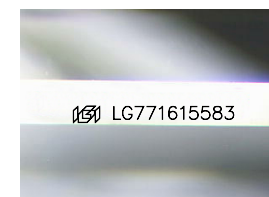


February 26, 2026  
IGI Report Number **LG771615583**  
Description **LABORATORY GROWN DIAMOND**  
Shape and Cutting Style **CUT CORNERED  
RECTANGULAR MODIFIED  
BRILLIANT**

Measurements **8.21 X 5.61 X 3.86 MM**

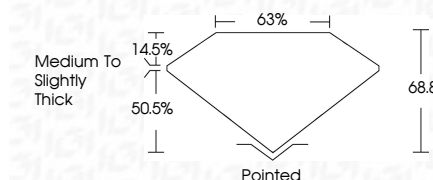
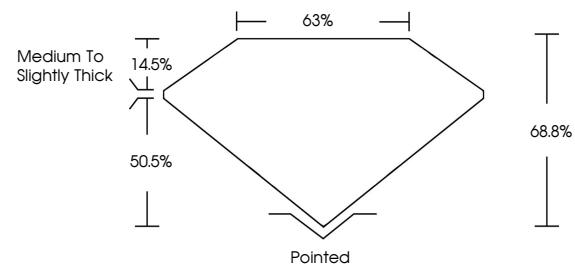
**GRADING RESULTS**

Carat Weight **1.53 CARAT**  
Color Grade **F**  
Clarity Grade **VVS 2**



Sample Image Used

**PROPORTIONS**



February 26, 2026  
IGI Report Number **LG771615583**  
Description **LABORATORY GROWN DIAMOND**  
Shape and Cutting Style **CUT CORNERED RECTANGULAR  
MODIFIED BRILLIANT**  
Measurements **8.21 X 5.61 X 3.86 MM**

**GRADING RESULTS**

Carat Weight **1.53 CARAT**  
Color Grade **F**  
Clarity Grade **VVS 2**

**ADDITIONAL GRADING INFORMATION**

Polish **EXCELLENT**  
Symmetry **EXCELLENT**  
Fluorescence **NONE**  
Inscription(s) **IGI LG771615583**

Comments: This Laboratory Grown Diamond was created by Chemical Vapor Deposition (CVD) growth process. Type IIa

**COLOR**

D E F G H I J Faint Very Light Light

**CLARITY**

FL	IF	VVS <sup>1-2</sup>	VS <sup>1-2</sup>	SI <sup>1-2</sup>	I <sup>1-3</sup>
Flawless	Internally Flawless	Very Very Slightly Included	Very Slightly Included	Slightly Included	Included

**ADDITIONAL GRADING INFORMATION**

Polish **EXCELLENT**  
Symmetry **EXCELLENT**  
Fluorescence **NONE**  
Inscription(s) **IGI LG771615583**  
Comments: This Laboratory Grown Diamond was created by Chemical Vapor Deposition (CVD) growth process. Type IIa



**IGI**



February 26, 2026  
IGI Report No LG771615583  
CUT CORNERED RECT. MODIFIED BRILLIANT  
8.21 X 5.61 X 3.86 MM  
Carat Weight **1.53 CARAT**  
Color Grade **F**  
Clarity Grade **VVS 2**  
Depth **68.8%**  
Table **65%**  
Girdle **Medium to Slightly Thick**  
Culet **Pointed**  
Polish **EXCELLENT**  
Symmetry **EXCELLENT**  
Fluorescence **NONE**  
Inscription(s) **IGI LG771615583**

Comments: This Laboratory Grown Diamond was created by Chemical Vapor Deposition (CVD) growth process. Type IIa