



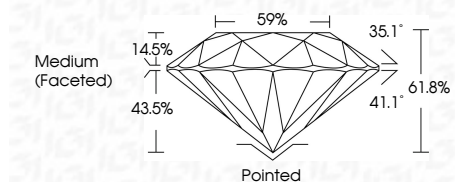
ELECTRONIC COPY

LG771615536 Report verification at igi.org



March 4, 2026 IGI Report Number LG771615536 Description LABORATORY GROWN DIAMOND Shape and Cutting Style ROUND BRILLIANT Measurements 10.13 - 10.20 X 6.28 MM

GRADING RESULTS Carat Weight 4.03 CARATS Color Grade G Clarity Grade VVS 2 Cut Grade IDEAL

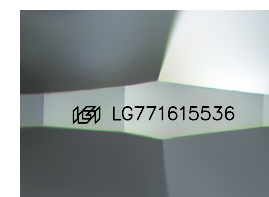


ADDITIONAL GRADING INFORMATION Polish EXCELLENT Symmetry EXCELLENT Fluorescence NONE Inscription(s) LG771615536 Comments: HEARTS & ARROWS This Laboratory Grown Diamond was created by Chemical Vapor Deposition (CVD) growth process. Type IIa



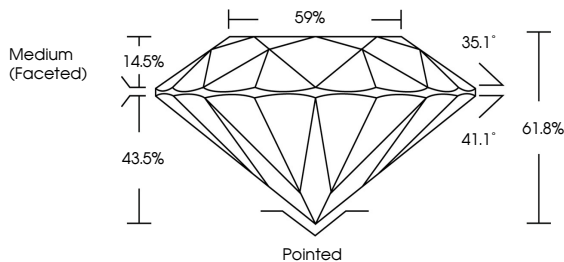
March 4, 2026 IGI Report No LG771615536 ROUND BRILLIANT 10.13 - 10.20 X 6.28 MM 4.03 CARATS G VVS 2 IDEAL 61.8% 59% Medium (Faceted) Pointed EXCELLENT EXCELLENT NONE LG771615536

Comments: HEARTS & ARROWS This Laboratory Grown Diamond was created by Chemical Vapor Deposition (CVD) growth process. Type IIa

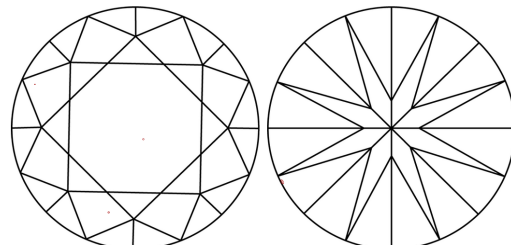


Sample Image Used

PROPORTIONS



CLARITY CHARACTERISTICS



KEY TO SYMBOLS Red symbols indicate internal characteristics. Green symbols indicate external characteristics.



COLOR

Color scale table with columns D, E, F, G, H, I, J, Faint, Very Light, Light

CLARITY

Clarity scale table with columns FL, IF, VS 1-2, VS 1-2, SI 1-2, I 1-3, Flawless, Internally Flawless, Very Very Slightly Included, Very Slightly Included, Slightly Included, Included



March 4, 2026 IGI Report Number LG771615536 Description LABORATORY GROWN DIAMOND Shape and Cutting Style ROUND BRILLIANT Measurements 10.13 - 10.20 X 6.28 MM

GRADING RESULTS Carat Weight 4.03 CARATS Color Grade G Clarity Grade VVS 2 Cut Grade IDEAL

ADDITIONAL GRADING INFORMATION Polish EXCELLENT Symmetry EXCELLENT Fluorescence NONE Inscription(s) LG771615536

Comments: HEARTS & ARROWS This Laboratory Grown Diamond was created by Chemical Vapor Deposition (CVD) growth process. Type IIa