



ELECTRONIC COPY

LG771615321
Report verification at igi.org



January 31, 2026
IGI Report Number **LG771615321**
Description **LABORATORY GROWN DIAMOND**
Shape and Cutting Style **CUSHION MODIFIED BRILLIANT**
Measurements **9.57 X 7.06 X 4.91 MM**
GRADING RESULTS
Carat Weight **2.40 CARATS**
Color Grade **F**
Clarity Grade **VS 1**

January 31, 2026
IGI Report Number **LG771615321**
Description **LABORATORY GROWN DIAMOND**
Shape and Cutting Style **CUSHION MODIFIED BRILLIANT**
Measurements **9.57 X 7.06 X 4.91 MM**

GRADING RESULTS

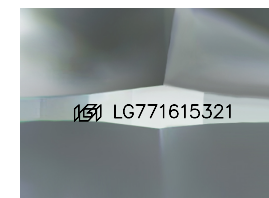
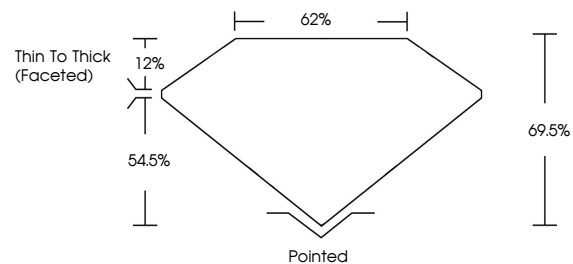
Carat Weight **2.40 CARATS**
Color Grade **F**
Clarity Grade **VS 1**

ADDITIONAL GRADING INFORMATION

Polish **EXCELLENT**
Symmetry **EXCELLENT**
Fluorescence **NONE**
Inscription(s) **IGI LG771615321**

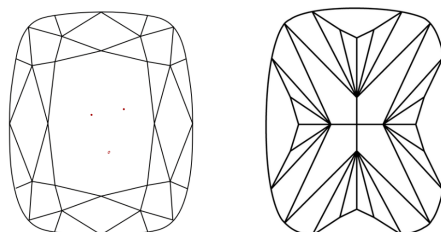
Comments: This Laboratory Grown Diamond was created by Chemical Vapor Deposition (CVD) growth process. Type IIa

PROPORTIONS



Sample Image Used

CLARITY CHARACTERISTICS



KEY TO SYMBOLS

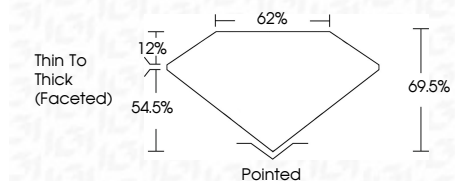
Red symbols indicate internal characteristics.
Green symbols indicate external characteristics.

COLOR

D E F G H I J Faint Very Light Light

CLARITY

| FL | IF | VS ¹⁻² | VS ¹⁻² | SI ¹⁻² | I ¹⁻³ |
|----------|---------------------|-----------------------------|------------------------|-------------------|------------------|
| Flawless | Internally Flawless | Very Very Slightly Included | Very Slightly Included | Slightly Included | Included |



ADDITIONAL GRADING INFORMATION

Polish **EXCELLENT**
Symmetry **EXCELLENT**
Fluorescence **NONE**
Inscription(s) **IGI LG771615321**
Comments: This Laboratory Grown Diamond was created by Chemical Vapor Deposition (CVD) growth process. Type IIa



January 31, 2026
IGI Report No LG771615321
CUSHION MODIFIED BRILLIANT
9.57 X 7.06 X 4.91 MM
2.40 CARATS
F
Color Grade
VS 1
69.5%
54.5%
12%
Thin To Thick (Faceted)
Pointed
EXCELLENT
EXCELLENT
NONE
IGI LG771615321
Comments: This Laboratory Grown Diamond was created by Chemical Vapor Deposition (CVD) growth process. Type IIa