



**ELECTRONIC COPY**

LG771612057  
Report verification at igi.org



January 29, 2026

IGI Report Number **LG771612057**

Description **LABORATORY GROWN DIAMOND**

Shape and Cutting Style **PRINCESS CUT**

Measurements **8.30 X 8.06 X 5.62 MM**

**GRADING RESULTS**

Carat Weight **3.35 CARATS**

Color Grade **D**

Clarity Grade **VVS 1**

January 29, 2026  
IGI Report Number **LG771612057**  
Description **LABORATORY GROWN DIAMOND**  
Shape and Cutting Style **PRINCESS CUT**  
Measurements **8.30 X 8.06 X 5.62 MM**

**GRADING RESULTS**

Carat Weight **3.35 CARATS**

Color Grade **D**

Clarity Grade **VVS 1**

**ADDITIONAL GRADING INFORMATION**

Polish **EXCELLENT**

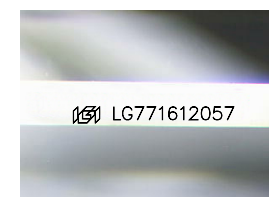
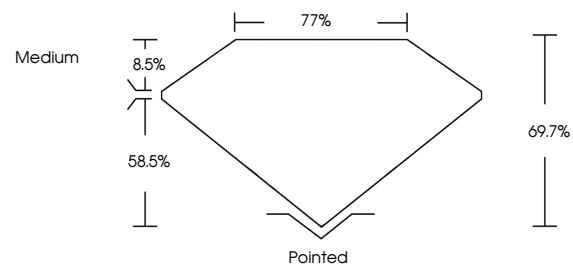
Symmetry **EXCELLENT**

Fluorescence **NONE**

Inscription(s) **IGI LG771612057**

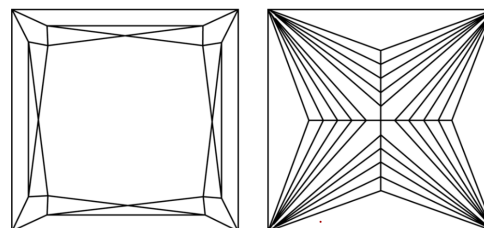
Comments: This Laboratory Grown Diamond was created by Chemical Vapor Deposition (CVD) growth process.  
Type IIa

**PROPORTIONS**



Sample Image Used

**CLARITY CHARACTERISTICS**



**KEY TO SYMBOLS**

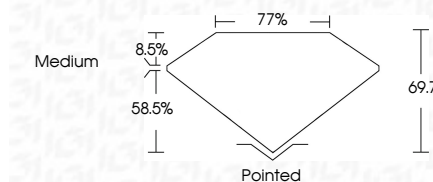
Red symbols indicate internal characteristics.  
Green symbols indicate external characteristics.

**COLOR**

D E F G H I J Faint Very Light Light

**CLARITY**

FL	IF	VVS <sup>1-2</sup>	VS <sup>1-2</sup>	SI <sup>1-2</sup>	I <sup>1-3</sup>
Flawless	Internally Flawless	Very Very Slightly Included	Very Slightly Included	Slightly Included	Included



**ADDITIONAL GRADING INFORMATION**

Polish **EXCELLENT**

Symmetry **EXCELLENT**

Fluorescence **NONE**

Inscription(s) **IGI LG771612057**

Comments: This Laboratory Grown Diamond was created by Chemical Vapor Deposition (CVD) growth process.  
Type IIa



**IGI**



January 29, 2026  
IGI Report No LG771612057  
PRINCESS CUT  
8.30 X 8.06 X 5.62 MM  
3.35 CARATS  
D  
VVS 1  
69.7%  
77%  
Medium  
Pointed  
EXCELLENT  
EXCELLENT  
NONE  
IGI LG771612057

Comments: This Laboratory Grown Diamond was created by Chemical Vapor Deposition (CVD) growth process.  
Type IIa