



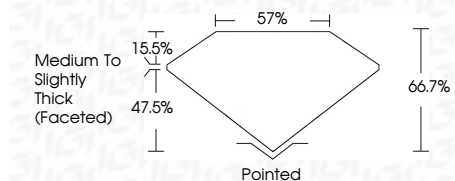
ELECTRONIC COPY

LG771612050
Report verification at igi.org



January 29, 2026
IGI Report Number **LG771612050**
Description **LABORATORY GROWN DIAMOND**
Shape and Cutting Style **SQUARE CUSHION MODIFIED
BRILLIANT**
Measurements **9.07 X 8.76 X 5.84 MM**

GRADING RESULTS
Carat Weight **4.01 CARATS**
Color Grade **E**
Clarity Grade **VVS 1**



ADDITIONAL GRADING INFORMATION
Polish **EXCELLENT**
Symmetry **EXCELLENT**
Fluorescence **NONE**
Inscription(s) **(IGI) LG771612050**
Comments: This Laboratory Grown Diamond was created by Chemical Vapor Deposition (CVD) growth process. Type IIa



January 29, 2026
IGI Report No LG771612050
SQUARE CUSHION MODIFIED BRILLIANT
9.07 X 8.76 X 5.84 MM
4.01 CARATS
E
VVS 1
66.7%
47.5%
Medium to Slightly Thick (Faceted)
Pointed
EXCELLENT
EXCELLENT
NONE
(IGI) LG771612050
Comments: This Laboratory Grown Diamond was created by Chemical Vapor Deposition (CVD) growth process. Type IIa

LABORATORY GROWN DIAMOND REPORT

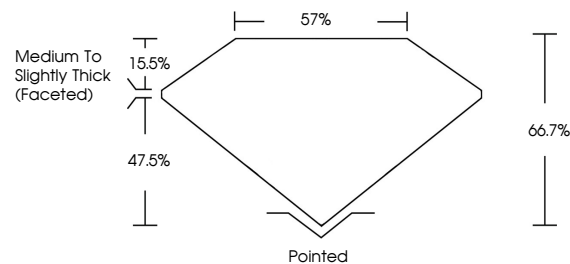
January 29, 2026
IGI Report Number **LG771612050**
Description **LABORATORY GROWN DIAMOND**
Shape and Cutting Style **SQUARE CUSHION MODIFIED
BRILLIANT**
Measurements **9.07 X 8.76 X 5.84 MM**

GRADING RESULTS
Carat Weight **4.01 CARATS**
Color Grade **E**
Clarity Grade **VVS 1**

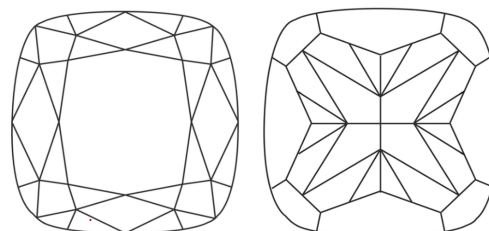
ADDITIONAL GRADING INFORMATION
Polish **EXCELLENT**
Symmetry **EXCELLENT**
Fluorescence **NONE**
Inscription(s) **(IGI) LG771612050**

Comments: This Laboratory Grown Diamond was created by Chemical Vapor Deposition (CVD) growth process. Type IIa

PROPORTIONS

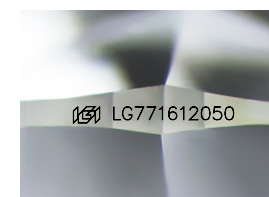


CLARITY CHARACTERISTICS



KEY TO SYMBOLS

Red symbols indicate internal characteristics.
Green symbols indicate external characteristics.



Sample Image Used

COLOR

D E F G H I J Faint Very Light Light

CLARITY

FL	IF	VVS ¹⁻²	VS ¹⁻²	SI ¹⁻²	I ¹⁻³
Flawless	Internally Flawless	Very Very Slightly Included	Very Slightly Included	Slightly Included	Included

