



**ELECTRONIC COPY**

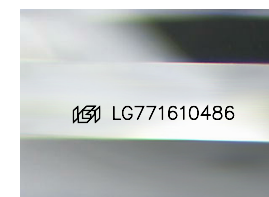
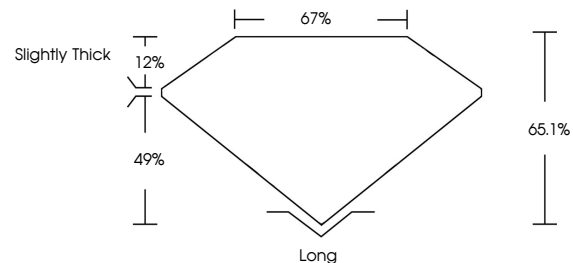
LG771610486  
Report verification at [igi.org](http://igi.org)



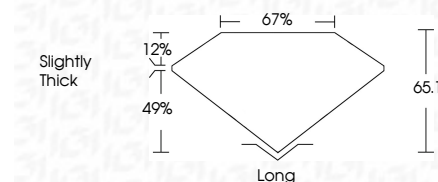
February 12, 2026  
IGI Report Number **LG771610486**  
Description **LABORATORY GROWN DIAMOND**  
Shape and Cutting Style **EMERALD CUT**  
Measurements **7.06 X 4.87 X 3.17 MM**  
**GRADING RESULTS**  
Carat Weight **1.04 CARAT**  
Color Grade **FANCY INTENSE PINK**  
Clarity Grade **VS 2**

February 12, 2026  
IGI Report Number **LG771610486**  
Description **LABORATORY GROWN DIAMOND**  
Shape and Cutting Style **EMERALD CUT**  
Measurements **7.06 X 4.87 X 3.17 MM**  
**GRADING RESULTS**  
Carat Weight **1.04 CARAT**  
Color Grade **FANCY INTENSE PINK**  
Clarity Grade **VS 2**

**PROPORTIONS**



Sample Image Used



**ADDITIONAL GRADING INFORMATION**

Polish **VERY GOOD**  
Symmetry **VERY GOOD**  
Fluorescence **STRONG**  
Inscription(s) **IGI LG771610486**

Comments: This Laboratory Grown Diamond was created by Chemical Vapor Deposition (CVD) growth process. Indications of post-growth treatment.

**ADDITIONAL GRADING INFORMATION**

Polish **VERY GOOD**  
Symmetry **VERY GOOD**  
Fluorescence **STRONG**  
Inscription(s) **IGI LG771610486**  
Comments: This Laboratory Grown Diamond was created by Chemical Vapor Deposition (CVD) growth process. Indications of post-growth treatment.

**COLOR**

D E F G H I J Faint Very Light Light

**CLARITY**

FL	IF	VS <sup>1-2</sup>	VS <sup>1-2</sup>	SI <sup>1-2</sup>	I <sup>1-3</sup>
Flawless	Internally Flawless	Very Very Slightly Included	Very Slightly Included	Slightly Included	Included



**IGI**



February 12, 2026  
IGI Report No **LG771610486**  
**EMERALD CUT**  
**1.04 CARAT**  
Carat Weight  
Color Grade **FANCY INTENSE PINK**  
Clarity Grade **VS 2**  
Depth **65.1%**  
Table **67%**  
Girdle **Slightly Thick**  
Culet **Long**  
Polish **VERY GOOD**  
Symmetry **VERY GOOD**  
Fluorescence **STRONG**  
Inscription(s) **IGI LG771610486**  
Comments: This Laboratory Grown Diamond was created by Chemical Vapor Deposition (CVD) growth process. Indications of post-growth treatment.