



February 2, 2026

IGI Report Number LG771610381

**ROUND BRILLIANT
LABORATORY GROWN DIAMOND**
5.70 - 5.74 X 3.41 MM

| | |
|----------------|-----------------|
| Carat Weight | 0.67 CARAT |
| Color Grade | D |
| Clarity Grade | VVS 2 |
| Cut Grade | EXCELLENT |
| Polish | EXCELLENT |
| Symmetry | EXCELLENT |
| Fluorescence | NONE |
| Inscription(s) | IGI LG771610381 |

Comments: This Laboratory Grown Diamond was created by Chemical Vapor Deposition (CVD) growth process. Type IIa

LABORATORY GROWN DIAMOND REPORT

| | |
|-------------------------|--------------------------|
| February 2, 2026 | |
| IGI Report Number | LG771610381 |
| Description | LABORATORY GROWN DIAMOND |
| Shape and Cutting Style | ROUND BRILLIANT |
| Measurements | 5.70 - 5.74 X 3.41 MM |

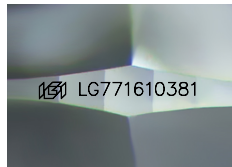
GRADING RESULTS

| | |
|---------------|------------|
| Carat Weight | 0.67 CARAT |
| Color Grade | D |
| Clarity Grade | VVS 2 |
| Cut Grade | EXCELLENT |

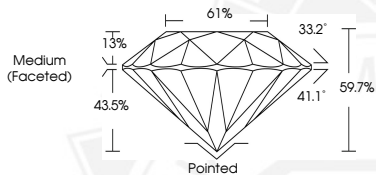
ADDITIONAL GRADING INFORMATION

| | |
|----------------|-----------------|
| Polish | EXCELLENT |
| Symmetry | EXCELLENT |
| Fluorescence | NONE |
| Inscription(s) | IGI LG771610381 |

Comments: This Laboratory Grown Diamond was created by Chemical Vapor Deposition (CVD) growth process. Type IIa



Sample Image Used



February 2, 2026

IGI Report Number LG771610381

**ROUND BRILLIANT
LABORATORY GROWN DIAMOND**
5.70 - 5.74 X 3.41 MM

| | |
|----------------|-----------------|
| Carat Weight | 0.67 CARAT |
| Color Grade | D |
| Clarity Grade | VVS 2 |
| Cut Grade | EXCELLENT |
| Polish | EXCELLENT |
| Symmetry | EXCELLENT |
| Fluorescence | NONE |
| Inscription(s) | IGI LG771610381 |

Comments: This Laboratory Grown Diamond was created by Chemical Vapor Deposition (CVD) growth process. Type IIa



THIS DOCUMENT WAS PRODUCED WITH THE FOLLOWING SECURITY MEASURES: SPECIAL DOCUMENT PAPER, INK SCREENS, WATERMARK, BACKGROUND DESIGNS, HOLOGRAM AND OTHER SECURITY FEATURES NOT LISTED AND DO EXCEED DOCUMENT SECURITY INDUSTRY GUIDELINES.