



**ELECTRONIC COPY**

**LABORATORY GROWN DIAMOND REPORT**

February 4, 2026  
IGI Report Number **LG771609058**

Description **LABORATORY GROWN DIAMOND**

Shape and Cutting Style **HEXAGONAL MODIFIED STEP CUT**

Measurements **11.60 X 5.32 X 3.10 MM**

**GRADING RESULTS**

Carat Weight **1.51 CARAT**

Color Grade **D**

Clarity Grade **VVS 2**

**ADDITIONAL GRADING INFORMATION**

Polish **EXCELLENT**

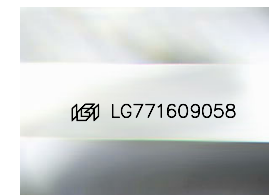
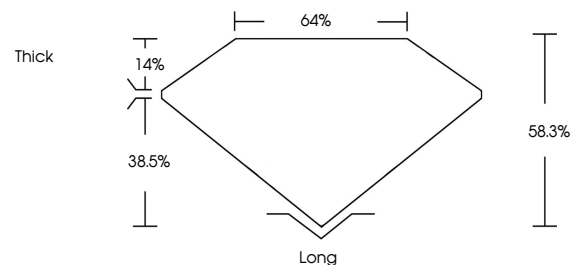
Symmetry **EXCELLENT**

Fluorescence **NONE**

Inscription(s) **IGI LG771609058**

Comments: This Laboratory Grown Diamond was created by Chemical Vapor Deposition (CVD) growth process.  
Type IIa

**PROPORTIONS**



Sample Image Used

**COLOR**

D E F G H I J Faint Very Light Light

**CLARITY**

FL	IF	VVS <sup>1-2</sup>	VS <sup>1-2</sup>	SI <sup>1-2</sup>	I <sup>1-3</sup>
Flawless	Internally Flawless	Very Very Slightly Included	Very Slightly Included	Slightly Included	Included



February 4, 2026

IGI Report Number **LG771609058**

Description **LABORATORY GROWN DIAMOND**

Shape and Cutting Style **HEXAGONAL MODIFIED STEP CUT**

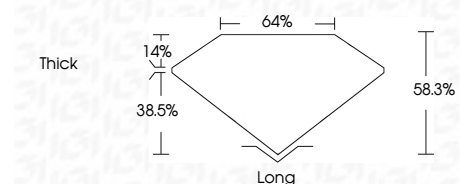
Measurements **11.60 X 5.32 X 3.10 MM**

**GRADING RESULTS**

Carat Weight **1.51 CARAT**

Color Grade **D**

Clarity Grade **VVS 2**



**ADDITIONAL GRADING INFORMATION**

Polish **EXCELLENT**

Symmetry **EXCELLENT**

Fluorescence **NONE**

Inscription(s) **IGI LG771609058**

Comments: This Laboratory Grown Diamond was created by Chemical Vapor Deposition (CVD) growth process.  
Type IIa



**IGI**



February 4, 2026  
IGI Report No LG771609058  
HEXAGONAL MODIFIED STEP CUT

1.51 CARAT  
D  
VVS 2  
58.3%  
64%  
Thick  
Long  
EXCELLENT  
EXCELLENT  
NONE  
IGI LG771609058

Comments: This Laboratory Grown Diamond was created by Chemical Vapor Deposition (CVD) growth process.  
Type IIa